

SHRI GURU RAM RAI INSTITUTE OF MEDICAL & HEALTH SCIENCES, DEHRADUN
TIME TABLE MBBS PHASE 02, BATCH 2023 W.E.F 1ST SEPT. 2024, VENUE LT03

SUBJECT WITH COLOUR CODE

Patho	Micro	Pharma	CM	FMT	MEDICINE	SURGERY	OBGY	Pandemic	Aetcom
PA	MI	PH	CM	FM	IM	SU	OG		
Date	Day	8 AM to 9 AM	9 AM to 10 AM	10 AM TO 1 PM	1PM TO 2PM	2 PM TO 4 PM			
1-Sep-24	Sunday	Sunday	Sunday	Sunday	Sunday	Sunday	Sunday	Sunday	Sunday
2-Sep-24	Monday	Lecture 1- PA1.1&1.3 History & Evolution Role of pathologist in diagnosis and management	OG2.1 (Part 1) -Describe and discuss the anatomy of the female reproductive tract, relationship to other pelvic organs, applied anatomy as related to Obstetrics and Gynaecology.Ing. Human Anatomy (V.I. With Human Anatomy)	CP	Lunch	MI1.1 Introduction to microscopy & microscope & MI 8.5, 8.6 Biomedical waste management (SGL)			
3-Sep-24	Tuesday	PH1.1 [Lec.-1] Define and describe the principles of Pharmacology and Pharmacotherapeutics.	(L-1) MI 1.1 Introduction, scope & history of Microbiology	CP	Lunch	PH1.3 [SGD -1] Enumerate and identify drug formulations and drug delivery systems. PH2.1 [SGD-2] Demonstrate understanding of the use of various dosage forms. (oral/local/ parenteral; solid/liquid)			
4-Sep-24	Wednesday	(L-2) MI 1.1 Bacterial Taxonomy & Morphology & Physiology	Lecture 2 - PA1.2 Common definitions & terms in pathology	CP	Lunch	SGL/SGT - PA 1.1 Seminars (2-3pm) Visit to different sections of pathology including blood bank (3-4pm)			
5-Sep-24	Thursday	Lecture 1 CM 3.1 Describe the health hazards of air, water, noise and radiation pollution (Vertical Integration with General Medicine, ENT) and home assignmnets.	PH 1.4 [Lec.-2] Pharmacokinetics: Absorption of drugs.	CP	Lunch	FMT SGL/SGT/ Practical FM1.9-Describe the importance of documentation in medical practice in regard to medicolegal examinations , Medical Certificates and medicolegal reports			
6-Sep-24	Friday	(L-3) MI 1.1 Pathogenesis of bacterial infections	Medicine Lecture-IM9.1Define, describe and classify anemia based on red blood cell size and reticulocyte count IM9.2Describe and discuss the morphological characteristics, aetiology and prevalence of each of the causes of anemia IM9.7Describe and discuss the meaning and utility of various components of the hemogram	CP	Lunch	PH 1.4 [SGD- 3] Pharmacokinetics:Describe distribution PH 1.10 [SGD-4] Describe parts of a correct, complete and legible generic Prescription. Identify errors in prescription and correct appropriately.			
7-Sep-24	Saturday	Lecture 3 - PA2.6 Cellular adaptations: atrophy, hypertrophy, hyperplasia, metaplasia, dysplasia	Surgery- Introduction to surgery , Endocrine and Metabolic response to injury , SU1.1 Describe Basic concepts of homeostasis, enumerate the metabolic changes in injury and their mediators Ing. Physiology, Biochemistry Surgery Lecture	FAP 1 CM 2.1-2.3, 5.2	Lunch	SGL/SGT - PA 1.1 Tissue processisng (2-3PM) PA 13.2 Anticoagulants in hematology (3-4 PM)			
8-Sep-24	Sunday	Sunday	Sunday	Sunday	Sunday	Sunday	Sunday	Sunday	Sunday

SHRI GURU RAM RAI INSTITUTE OF MEDICAL & HEALTH SCIENCES, DEHRADUN
TIME TABLE MBBS PHASE 02, BATCH 2023 W.E.F 1ST SEPT. 2024, VENUE LT03

SUBJECT WITH COLOUR CODE

Patho	Micro	Pharma	CM	FMT	MEDICINE	SURGERY	OBGY	Pandemic	Aetcom
PA	MI	PH	CM	FM	IM	SU	OG		
Date	Day	8 AM to 9 AM	9 AM to 10 AM	10 AM TO 1 PM	1PM TO 2PM	2 PM TO 4 PM			
9-Sep-24	Monday	Lecture 4 - PA 2.1 Causes, mechanisms, types, effects and clinical significance of cell injury	OG2.1 (Part 2)- Describe and discuss the development of the female reproductive tract, relationship to other pelvic organs, applied anatomy as related to Obstetrics and Gynaecology AN52.8 - - Describe the development of Male and the female reproductive system. (V.I. With Human Anatomy)	CP	Lunch	MI 1.1 Overview of bacterial infections (Gram Positive/Gram Negative/Anaerobes/ Miscellaneous) (SGL)			
10-Sep-24	Tuesday	PH 1.4 [Lec.-3] Pharmacokinetics: Describe metabolism of drugs.	(L-4) MI 1.1 Bacterial genetics I	CP	Lunch	PH 1.11 [SGD-5] Describe various routes of drug administration, e.g., Oral, SC, IV, IM, S/L/ inhalational. PH 1.4[SGD-6] Tutorial:absorption, distribution.			
11-Sep-24	Wednesday	Guru Parav							
12-Sep-24	Thursday	PH 1.4 [Lec.-4] Pharmacokinetics: Describe excretion of drugs.	(L-5) MI 1.1 Bacterial genetics II	CP	Lunch	MI1.2 Perform and identify the different causative agents of Infectious diseases by Gram Stain- 1			
13-Sep-24	Friday	PH 1.5 [Lec.-5] Describe general principles of mechanism of drug action.	Medicine Lecture-IM9.6 Describe the appropriate diagnostic work up based on the presumed aetiology IM9.8 Describe and discuss the various tests for iron deficiency IM9.13- Prescribe replacement therapy with iron,	CP	Lunch	PH 1.11 [SGD- 8] Describe various routes of drug administration, e.g., Oral, SC, IV,IM, S/L <u>IM 11.19 (Integrated Learning)</u> <u>Demonstrate and counsel patients on the correct technique to administer insulin.</u> <u>(Integration with General medicine)</u>			
14-Sep-24	Saturday	Lecture 5 - PA2.2, 2.4 Etiology, mechanisms and morphology of cell injury. Distinguish reversible-irreversible injury	Surgery, Metabolic response to injury contd. SU1.2 Describe the factors that affect the metabolic response to injury, Ing. Biochemistry SU1.3 Describe basic concepts of perioperative care	AETCOM Module 2.1 Pharmacology- 1	Lunch	SGL/SGT - PA 13.2 DOAP Vacutainers Practical (Application)			
15-Sep-24	Sunday	Sunday	Sunday	Sunday	Sunday	Sunday	Sunday	Sunday	Sunday
16-Sep-24	Monday	EID A MILAD							

SHRI GURU RAM RAI INSTITUTE OF MEDICAL & HEALTH SCIENCES, DEHRADUN
TIME TABLE MBBS PHASE 02, BATCH 2023 W.E.F 1ST SEPT. 2024, VENUE LT03

SUBJECT WITH COLOUR CODE

Patho	Micro	Pharma	CM	FMT	MEDICINE	SURGERY	OBGY	Pandemic	Aetcom
PA	MI	PH	CM	FM	IM	SU	OG		
Date	Day	8 AM to 9 AM	9 AM to 10 AM	10 AM TO 1 PM	1PM TO 2PM	2 PM TO 4 PM			
17-Sep-24	Tuesday	PH 1.5 [Lec.-6] Describe general principles of mechanism of drug action.	SDL 1 CM 3.2- Describe concepts of safe and wholesome water, sanitary sources of water, water purification processes, water quality standards, concepts of water conservation and rainwater harvesting (No integration); with marks for Musuem Study and Library Assignments as applicable.	CP	Lunch	[SGD-10]PH2.3 (DOAP) Demonstrate the appropriate setting up of an intravenous drip in a simulated environment. PH 4.1 [Skill Assessment] Administer drugs through various routes in a simulated environment using mannequins.			
18-Sep-24	Wednesday	(L-6) MI 1.4 Sterilization (VI Gen Surgery)	Lecture 6 - PA 13.1 Introduction to Haematology, haematopoiesis & extramedullary haematopoiesis (VI-Gen Med)	CP	Lunch	SGL/SGT - PA 2.8 DOAP Cell injuries, manifestations and consequences in gross and microscopic specimens			
19-Sep-24	Thursday	PH 1.5 [Lec.-7] Describe general principles of mechanism of drug action.	FMT Lecture Topic-Introduction FM1.1	CP	Lunch	MI 1.3 Epidemiology of Infectious Diseases (HI-CM) (HA) & MI 1.5 Sterilization and Disinfection SGL /Museum visit			
20-Sep-24	Friday	(L-7) MI 1.4 Disinfection (VI Gen Surgery)	Medicine Lecture-IM9.9-Order and interpret tests for anemia including hemogram, red cell indices, reticulocyte count, hemilytic anemia	CP	Lunch	PH 1.7 [SGD- 11] Define, identify and describe the management of adverse drug reactions (ADRs). PH 1.6 [SGD-12] Describe principles of Pharmacovigilance & ADR reporting systems			
21-Sep-24	Saturday	PH2.4 [SGD-13] Demonstrate the correct method of calculation of drug dosage in patients including those used in special situations	FMT SDL Topic-History of Forensic Medicine FM 1.2	AETCOM Module 2.1 Pharmacology-2	Lunch	SGL/SGT - PA 2.4 Cell death-types, mechanisms, necrosis, apoptosis (basic as contrasted with necrosis), autolysis(2-3 PM) PA13.3 Define and classify Anemia (3-4pm) (VI-Gen Med)			
22-Sep-24	Sunday	Sunday	Sunday	Sunday	Sunday	Sunday			
23-Sep-24	Monday	Lecture 7 - PA 2.7 Mechanisms of cellular aging and apoptosis	PH1.9 [SGD-14] Describe nomenclature of drugs i.e. generic, branded drugs PH 3.7 [SGD-15] Prepare a list of essential medicines for a healthcare facility.	CP	Lunch	MI 1.1 Lab Diagnosis of bacterial infections 1- Culture media & culture methods - SGL			


SHRI GURU RAM RAI INSTITUTE OF MEDICAL & HEALTH SCIENCES, DEHRADUN
TIME TABLE MBBS PHASE 02, BATCH 2023 W.E.F 1ST SEPT. 2024, VENUE LT03

SUBJECT WITH COLOUR CODE

Patho	Micro	Pharma	CM	FMT	MEDICINE	SURGERY	OBGY	Pandemic	Aetcom
PA	MI	PH	CM	FM	IM	SU	OG		
Date	Day	8 AM to 9 AM	9 AM to 10 AM	10 AM TO 1 PM	1PM TO 2PM	2 PM TO 4 PM			
24-Sep-24	Tuesday	SGL/SGT - PA13.5 Evaluation of peripheral blood film in anemia (VI-Gen Med)	PA 2.4 SDL - Cell cycle and proliferation	CP	Lunch	[SGD17] PH1.2Describe the basis of Evidence based medicine and Therapeutic drug monitoring. Tutorial Metabolism and elimination			
25-Sep-24	Wednesday	(L-8) MI 1.6 Antimicrobials: Antimicrobial agents, antimicrobial resistance (HI Pharma)	MI 1.1 Normal human microbiota (SDL-1)	CP	Lunch	SGL/SGT - PA 13.5- DOAP a)Peripheral smear - Preparation, staining, evaluation and DLC (VI- Gen Med)			
26-Sep-24	Thursday	FMT Lecture Topic-Legal Procedures, Court in India and their powers FM1.3,FM1.4,FM1.5	PH 1.14 [Lec.-8] Describe mechanism of action, types, doses, side effects, indications and contraindications of cholinergic drugs.	CP	Lunch	MI 1.1 Lab Diagnosis of bacterial infections 2 - Identification of bacteria (conventional and automated methods) (SGL) / Visit to lab (SVL)			
27-Sep-24	Friday	PH 1.14 [Lec.-9] Describe mechanism of action, types, doses, side effects, indications and contraindications of cholinergic drugs.	(L-9) MI 1.6 Antimicrobials: Antimicrobial agents, antimicrobial resistance (HI Pharma)	CP	Lunch	[SGD -19] PH 2.4Demonstrate the correct method of calculation of drug dosage in patients including those used in special situations. SGD:Tutorial Pharmacodynamics			
28-Sep-24	Saturday	(L-10) MI 1.1 General virology and overview of viral infections	[SDL-1] Pharma PH: 1.8 Identify and describe the management of drug interactions.	Pandemic Module 2.1 (Microbiology)	Lunch	SGL/SGT - PA4.1- a General features of acute inflammation (2-3PM) (VI - Gen Sur) PA 2.3, 2.5 Discuss Intracellular accumulation of fats, proteins, carbohydrates, pigment, pathologic calcifications and gangrene(3-4pm)			
29-Sep-24	Sunday	Sunday	Sunday	Sunday	Sunday	Sunday			
30-Sep-24	Monday	Lecture 8 - PA4.1-b General features of chronic inflammation (VI - Gen Sur)	MI 1.1 Molecular methods and typing methods(SDL 2)	CP	Lunch	MI 1.6 Laboratory diagnosis of bacterial infections-3: Antimicrobial susceptibility testing & MI 1.1 Laboratory diagnosis of bacterial infections-5;Visit to molecular lab			





SHRI GURU RAM RAI INSTITUTE OF MEDICAL & HEALTH SCIENCES, DEHRADUN
TIME TABLE MBBS PHASE 02, BATCH 2023 W.E.F 1ST SEPT. 2024, VENUE LT03

SUBJECT WITH COLOUR CODE

Patho	Micro	Pharma	CM	FMT	MEDICINE	SURGERY	OBGY	Pandemic	Aetcom
PA	MI	PH	CM	FM	IM	SU	OG		
Date	Day	8 AM to 9 AM	9 AM to 10 AM	10 AM TO 1 PM	1PM TO 2PM	2 PM TO 4 PM			
1-Oct-24	Tuesday	PH 1.14 [Lec.-10] Describe mechanism of action, types, doses, side effects, indications and contraindications of anticholinergic drugs.	FMT SDL Topic-Court Procedure,Dying Declaration & Dying Deposition FM1.6 ,FM1.7,FM1.8	CP	Lunch	[SGD-21] PH 1.7 Define, identify and describe the management of adverse drug reactions (ADRs).- case based scenarios Pharmacokinetics /Pharmacodynamic exercises			
2-Oct-24	Wednesday	GANDHI JYANTI							
3-Oct-24	Thursday	Lecture 2 CM 3.3- Describe the aetiology and basis of water borne diseases /jaundice/hepatitis/ diarrheal diseases (Vertical Integration with Microbiology, General Medicine, Paediatrics).	PH 1.14 [Lec.-11] Describe mechanism of action, types, doses, side effects, indications and contraindications anticholinergic drugs.	CP	Lunch	FMT SGL/SGT/ Practical Topic-Oath, Duties of Registered Medical Practitioner, Describe the Code of Medical Ethics 2002 conduc, Etiquette and Ethics in Medical Practice. FM4.22, FM4.23,FM4.24,FM4.2,FM4.3			
4-Oct-24	Friday	(L-11) MI 1.1 General parasitology and overview of parasitic infections	Medicine Lecture-IM9.10Describe, perform and interpret a peripheral smear and stool occult blood IM9.13- Prescribe replacement therapy, B12, folate	CP	Lunch	[SGD 23] PH2.3 (DOAP) Demonstrate the appropriate setting up of an intravenous drip in a simulated environment. PH 4.1 [Skill Assessment] Administer drugs through various routes in a simulated			
5-Oct-24	Saturday	Lecture 9 - PA13.4 (a) Enumeration and description of routine investigations of anemia (VI- Gen Med)	Surgery, Topic: Shock SU2.1 Pathophysiology of shock, types of shock & principles of resuscitation including fluid replacement and monitoring Ing. Pathology , Physiology	FAP 2 CM 2.1-2.3, 5.2, 5.4	Lunch	SGL/SGT - PA4.2 Mediators of acute inflammation (VI - Gen Sur) 2-3 PM PA13.4 (b) Enumeration and description of special investigations of anemia 3-4 PM			
6-Oct-24	Sunday	Sunday	Sunday	Sunday	Sunday	Sunday	Sunday	Sunday	Sunday
7-Oct-24	Monday	Lecture 10 - PA14.1 Describe iron metabolism (VI- Bioch)	OG3.1(Part 1) -Describe the physiology of ovulation/ menstruation	CP	Lunch	MI 1.1 Laboratory diagnosis of viral infections—microscopy, cultivation, serology, molecular tests MI 1.7 Immunity (innate & acquired) — Immunological mechanisms in			
8-Oct-24	Tuesday	PH 1.13 [Lec.-12] Describe mechanism of action, types, doses, side effects, indications and contraindications of adrenergic drugs.	(L-12) MI 1.1 General mycology and overview of fungal infections	CP	Lunch	Sports 			
9-Oct-24	Wednesday	(L-13) MI 1.8 Antigen (VI Pedia, HI Patho)	Lecture 11 - PA14.2 Etiology, investigations and differential diagnosis of microcytic hypochromic anemia (VI-Gen Med)	CP	Lunch				

SHRI GURU RAM RAI INSTITUTE OF MEDICAL & HEALTH SCIENCES, DEHRADUN
TIME TABLE MBBS PHASE 02, BATCH 2023 W.E.F 1ST SEPT. 2024, VENUE LT03

SUBJECT WITH COLOUR CODE

Patho	Micro	Pharma	CM	FMT	MEDICINE	SURGERY	OBGY	Pandemic	Aetcom
PA	MI	PH	CM	FM	IM	SU	OG		
Date	Day	8 AM to 9 AM	9 AM to 10 AM	10 AM TO 1 PM	1PM TO 2PM	2 PM TO 4 PM			
10-Oct-24	Thursday				Sports Full Day				
11-Oct-24	Friday				Sports Full Day				
12-Oct-24	Saturday				Sports Full Day				
13-Oct-24	Sunday	Sunday	Sunday	Sunday	Sunday	Sunday			
14-Oct-24	Monday	Lecture 12 - PA4.3 Chronic Inflammation- causes, types, non specific and Granulomatous	OG3.1(Part 2) - Describe the physiology of gametogenesis/fertilization/implantation (V.I. With Physiology)	CP	Lunch	MI 1.1 Laboratory diagnosis of parasitic infections & fungal infections (SGL)			
15-Oct-24	Tuesday	PH 1.13 [Lec.-13] Describe mechanism of action, types, doses, side effects, indications and contraindications of anti-adrenergic drugs.	SDL 2 CM 3.5- Describe the standards of housing and the effect of housing on health (No integration); with marks for Musuem Study and Library Assignments as applicable.	CP	Lunch	PH 1.13 Describe mechanism of action, types, doses, side effects, indications and contraindications of anti-adrenergic drugs.			
16-Oct-24	Wednesday	Balmiki Jayanti							
17-Oct-24	Thursday	FMT Lecture Topic-IDENTIFICATION I (Criminals, unknown Persons, dead bodies, hairs, fibers, footprints, scars, tattos, poroscopy and superimposition) FM3.2	PH 1.13 [Lec.-14] Describe mechanism of action, types, doses, side effects, indications and contraindications of anti-adrenergic drugs.	CP	Lunch	[SGD-25] Tuorial: Cholinergic and anticholinergic drugs			
18-Oct-24	Friday	(L-14) MI 1.8 Antibody (VI Pedia, HI Patho)	Medicne Lecture-IM9.11-Describe the indications and interpret the results of a bone marrow aspirations and biopsy IM9.12-Describe, develop a diagnostic plan to determine the aetiology of anemia IM9.16- Incorporate patient preferences in the management of anemia	CP	Lunch	SGL/SGT - DOAP PA14.3 Identify and describe the peripheral smear in microcytic anemia (VI-Gen Med)			
19-Oct-24	Saturday				Cultural Fest				
20-Oct-24	Sunday				Sunday				
21-Oct-24	Monday	Lecture 13 - PA5.1 Repair and regeneration including wound healing and its types (VI- Gen Sur)	SGL/SGT - PA6.1 Oedema - types, pathogenesis and clinical correlations (VI- Gen Med)	CP	Lunch	MI 1.10, 8.15Lab Methods used for detection of Antigen-antibody reactions (conventional) &General Microbiology FA			

SHRI GURU RAM RAI INSTITUTE OF MEDICAL & HEALTH SCIENCES, DEHRADUN
TIME TABLE MBBS PHASE 02, BATCH 2023 W.E.F 1ST SEPT. 2024, VENUE LT03

SUBJECT WITH COLOUR CODE

Patho	Micro	Pharma	CM	FMT	MEDICINE	SURGERY	OBGY	Pandemic	Aetcom
PA	MI	PH	CM	FM	IM	SU	OG		
Date	Day	8 AM to 9 AM	9 AM to 10 AM	10 AM TO 1 PM	1PM TO 2PM	2 PM TO 4 PM			
22-Oct-24	Tuesday	PH1.16 [Lec.-15] Describe mechanism/s of action, types, doses, side effects, indications and contraindications of the drugs which act by modulating autacoids, : anti-histaminics	FMT SDL Topic- Describe dactylography ,footprints, scars, tattoos, poroscopy and superimposition. FM3.2.2	CP		Lunch		[SGD-27] (PH1.13,1.14) Written Assessment: Autonomic Nervous System	
23-Oct-24	Wednesday	PH1.16 [Lec.-16] Describe mechanism/s of action, types, doses, side effects, indications and contraindications of the drugs modulating autacoids, - PGs, Leukotrienes	Lecture 14 - Hyperemia, congestion, hemorrhage PA6.2	CP		Lunch		SGL/SGT - PA4.4 DOAP Identify & describe acute and chronic inflammation in gross and microscopic specimens	
24-Oct-24	Thursday	(L-15) MI 1.10, 8.15 Lab Methods used for detection of Antigen-antibody reactions - (newer) (ELISA, ELFA, CLIA, IFA, westernblot, rapid methods	PH1.16 [Lec.-17] Describe mechanism/s of action, types, doses, side effects, indications and contraindications of the drugs which act by modulating autacoids,: NSAIDs,	CP		Lunch		MI 1.10 Hypersensitivity (SGL)	
25-Oct-24	Friday	PH1.16 [Lec.-18] Describe mechanism/s of action, types, doses, side effects, indications and contraindications of the drugs which act by modulating autacoids, NSAIDs.	(L-16) MI 1.8 Complement system (VI Pedia, HI Patho)	CP		Lunch		2 - 4 PM [SGD-29] PH1.16 Describe mechanism/s of action, types, doses, side effects, indications and contraindications of the drugs which act by modulating autacoids, : 5HT IM 17.11 (Integrated Learning) Describe the indications, pharmacology, dose, side effects of abortive therapy in migraine (Integration with General Medicine). IM 17.12 Describe the indications, pharmacology, dose, side effects of prophylactic therapy in migraine. (Integration with General Medicine)	

SHRI GURU RAM RAI INSTITUTE OF MEDICAL & HEALTH SCIENCES, DEHRADUN
TIME TABLE MBBS PHASE 02, BATCH 2023 W.E.F 1ST SEPT. 2024, VENUE LT03

SUBJECT WITH COLOUR CODE

Patho	Micro	Pharma	CM	FMT	MEDICINE	SURGERY	OBGY	Pandemic	Aetcom
PA	MI	PH	CM	FM	IM	SU	OG		
Date	Day	8 AM to 9 AM	9 AM to 10 AM	10 AM TO 1 PM	1PM TO 2PM	2 PM TO 4 PM			
26-Oct-24	Saturday	[SGD-30] PH1.16 PH 1.16 :Describe mechanism/s of action, types, doses, side effects, indications and contraindications of the drugs which act by modulating autacoids; drugs for gout, anti-rheumatic drugs.	[SGD-31] -PH: 3.5 To prepare and explain a list of P- drugs for a given case/ condition.	Pandemic Module 10 to 12 AM 2.1 (Microbiology) 12 to 1 PM (2.2 CM)	Lunch	SGL/SGT - PA12.1 Pathogenesis of disorders caused by air pollution, tobacco and alcohol(2-3 PM) (HI- CM) PA6.3 Shock- pathogenesis and stages (3-4pm) (VI- GEN SUR)			
27-Oct-24	Sunday	Sunday	Sunday	Sunday	Sunday	Sunday			
28-Oct-24	Monday	Lecture 15 - PA15.1 Metabolism of Vitamin B12 , etiology and pathogenesis of B12 deficiency (VI- Bioch. Gen Med)	FMT SDL Topic-Social aspects of Medico-Legal Cases FM4.13,FM4.14,FM4.15	CP	Lunch	MI 1.10 Autoimmunity (SGL)			
29-Oct-24	Tuesday	PH 1.15 [Lec.-19] Describe mechanism/s of action, types, doses, side effects, indications and contraindications of skeletal muscle relaxants.	SDL Patho - PA15. 2,15.4 Lab investigations of macrocytic anemia, etiology and distinguishing features of megaloblastic and non-megaloblastic macrocytic anemia (VI- Gen Med)	CP	Lunch	PH 1.26 [SGD-33] Describe mechanisms of action, types, doses, side effects, indications and contraindications of the drugs modulating the rennin angiotensin and aldosterone system.			
30-Oct-24	Wednesday	MI 1.8 Components of immune system- Organs, cells and products (SDL-3)	Lecture 16 - PA6.5,6.6 Embolism causes and Ischaemia/infarction- types, etiology, morphologic changes and clinical effects	CP	Lunch	SGL/SGT - PA 15.3 - DOAP - Identify and describe the peripheral blood picture of macrocytic anemia			
31-Oct-24	Thursday	DEEPAWALI							
1-Nov-24	Friday	DEEPAWALI							
2-Nov-24	Saturday	DEEPAWALI							
3-Nov-24	Sunday	Sunday							
4-Nov-24	Monday	Lecture 17 - PA6.4 Normal haemostasis and etiopathogenesis and consequences of thrombosis	OG4.1 (Part 1) - Describe and discuss the embryology of fetus, factors influencing fetal growth and development, fetal circulation (V.I. With Human Anatomy)	CP	Lunch	MI 8.7 Hand hygiene and PPE-1 (SVL) MI 8.5, 8.6 Biomedical waste management			
5-Nov-24	Tuesday	PH 1.26 (SGD 34) Describe mechanisms of action, types, doses, side effects, indications and contraindications of the drugs modulating the rennin angiotensin and aldosterone system.	(L-17) MI 1.8 Immune responses: Cell-mediated (VI Pedia, HI Patho)	CP	Lunch	PH 3.2 [SGD-36] Perform and interpret a critical appraisal (audit) of a given prescription.			

SHRI GURU RAM RAI INSTITUTE OF MEDICAL & HEALTH SCIENCES, DEHRADUN
TIME TABLE MBBS PHASE 02, BATCH 2023 W.E.F 1ST SEPT. 2024, VENUE LT03

SUBJECT WITH COLOUR CODE

Patho	Micro	Pharma	CM	FMT	MEDICINE	SURGERY	OBGY	Pandemic	Aetcom
PA	MI	PH	CM	FM	IM	SU	OG		
Date	Day	8 AM to 9 AM	9 AM to 10 AM	10 AM TO 1 PM	1PM TO 2PM	2 PM TO 4 PM			
6-Nov-24	Wednesday	(L-18) MI 1.8 Immune responses: antibody-mediated (VI Pedia, HI Patho)	Lecture 18 - Pathogenesis and pathology of amyloidosis	PA 3.1-	CP	Lunch	SGL/SGT - DOAP Identify and describe the gross and microscopic features of infarction in a pathologic specimen	PA 6.7	
7-Nov-24	Thursday	Lecture 3 CM 3.4- Describe the concept of solid waste, human excreta and sewage disposal (No integration). Give case scenario for next SDL CM3.6	PH 1.24 [Lec.-20] Describe the mechanism/s of action, types, doses, side effects, indications and contraindications of the drugs affecting renal systems including diuretics.		CP	Lunch	FMT SGL/SGT/ Practical Topic- IDENTIFICATION-II (Sex, Religion, stature, age, teeth-eruption)FM3.1		
8-Nov-24	Friday	Fresher Party							
9-Nov-24	Saturday	Lecture 19- PA16.1 Define & classify Hemolytic Anemia (VI- Bio, Gen Med)	Surgery Shock 2 lecture , SU2.2 Describe the clinical features of shock and its appropriate treatment		FAP 3 CM 2.1-2.3, 5.2	Lunch	SGL/SGT - DOAP - PA 3.2 Amyloidosis in a pathology specimen		
10-Nov-24	Sunday	Sunday	Sunday	Sunday	Sunday	Sunday	Sunday	Sunday	Sunday
11-Nov-24	Monday	Lecture 20 - PA16.2 Pathogenesis, clinical features and hematologic indices of hemolytic anemia (VI- Bio, Gen Med)	OG4.1 (Part 2) – Development of placenta, anatomy and physiology of placenta and teratogenesis. (V.I. With Human Anatomy)		CP	Lunch	MI1.2 Gram staining-2 & MI 8.7 Hand hygiene & PPE -2 MI 8.5, 8.6 Biomedical waste management		
12-Nov-24	Tuesday	IGAS BAGWAL							
13-Nov-24	Wednesday	PH 1.24 [Lec.-21] Describe the mechanism/s of action, types, doses, side effects, indications and contraindications of the drugs affecting renal systems including diuretics.	Lecture 21 - PA16.3 Pathogenesis, hematologic indices and PBF of sickle cell anemia (VI- Bio, Gen Med)		CP	Lunch	SGL/SGT - OSPE DOAP - PA23.1-a Abnormal urinary findings in disease states		
14-Nov-24	Thursday	(L-19) MI 1.11 Transplant and cancer immunology	PH 1.27 [Lec.-22] Describe the mechanisms of action, types, doses, side effects, indications and contraindications of antihypertensive drugs.		CP	Lunch	MI 1.2 ZN Staining-1 (SVL)		
15-Nov-24	Friday	GURU NANAK JYANTI							
16-Nov-24	Saturday	Pharma SDL -II Antidiuretics PH: 1.24	SU2.2 Describe the clinical features of shock and its appropriate treatment- Septicaemic shock- pathophysiology and management		AETCOM Module 2.2 Microbiology	Lunch	SGL/SGT - OSPE DOAP - PA23.1-b Abnormal urinary findings in disease states		
17-Nov-24	Sunday	Sunday	Sunday	Sunday	Sunday	Sunday	Sunday	Sunday	Sunday

SHRI GURU RAM RAI INSTITUTE OF MEDICAL & HEALTH SCIENCES, DEHRADUN
TIME TABLE MBBS PHASE 02, BATCH 2023 W.E.F 1ST SEPT. 2024, VENUE LT03

SUBJECT WITH COLOUR CODE

Patho	Micro	Pharma	CM	FMT	MEDICINE	SURGERY	OBGY	Pandemic	Aetcom
PA	MI	PH	CM	FM	IM	SU	OG		
Date	Day	8 AM to 9 AM	9 AM to 10 AM	10 AM TO 1 PM	1PM TO 2PM	2 PM TO 4 PM			
18-Nov-24	Monday	Lecture 22 - PA16.3-Pathogenesis, hematologic indices and PBF of thalassemia (VI- Bio, Gen Med)	FMT SDL Topic- Bioethics,Ethical Principles,Clinical research & Ethics Discuss human experimentation, constitution and functions of ethical committees. FM4.16, FM4.17,FM4.25,FM4.26	CP	Lunch	MI 8.16 National Health Programmes for Communicable Diseases (HI CM) & MI 8.7 Hand hygiene & PPE -3/ Museum visit			
19-Nov-24	Tuesday	PH 1.27 [Lec.-23] Describe the mechanisms of action, types, doses, side effects, indications and contraindications of antihypertensive drugs .	SDL 3 CM 3.6- Describe the role of vectors in the causation of diseases. Also discuss National Vector Borne disease Control Program (Vertical integration with Microbiology); with marks for Musuem Study and Library Assignments as applicable.	CP	Lunch	PH4.2 (DOAP) [SGD 38] Demonstrate the effects of drugs on blood pressure (vasopressor and vaso-depressors with appropriate blockers) using computer aided learning.			
20-Nov-24	Wednesday	(L-20) MI 1.9 Immunoprophylaxis (VI Pedia)	Lecture 23 - PA16.4 Etiology pathogenesis, hematologic indices and PBF of Acquired hemolytic anemia (VI- Bio, Gen Med)	CP	Lunch	SGL/SGT - PA16.5 Peripheral blood picture in hemolytic anaemias (2-3PM) (VI- Gen Med) PA10.4- Pathogenesis and pathology of common bacterial, viral, protozoal and helminthic diseases (3-4PM) (VI- Gen Med) (HI- Micro)			
21-Nov-24	Thursday	PH 1.27 [Lec.-24] Describe the mechanisms of action, types, doses, side effects, indications and contraindications of antihypertensive drugs and shock.	FMT Lecture Topic-Indian Medical Register, Laws in Relation to medical practice ,duties of a medical practitioner, ethics related to HIV patients FM4.4, FM4.5, FM4.6, FM4.7	CP	Lunch	MI 1.10 Immunodeficiency disorders (VI Pedia)			
22-Nov-24	Friday	(L-21) MI 2.1 Etiopathogenesis and diagnosis of Acute rheumatic fever (Streptococcus spp.)(VI Gen Med, HI Patho)	Medicine Lecture-IM9.11-Describe the indications and interpret the results of a bone marrow aspirations and biopsy IM9.12-Describe, develop a diagnostic plan to determine the aetiology of anemia IM9.16- Incorporate patient preferences in the management of anemia	CP	Lunch	.PH 1.28 [SGD 40] Describe the mechanisms of action, types, doses, side effects, indications and contraindications of the drugs used in ischemic heart disease (stable, unstable angina and myocardial infarction). P Drug Exercise Angina			
23-Nov-24	Saturday	(L-22) MI 2.3 Etiopathogenesis and diagnosis of infective endocarditis (VI Gen Med, HI Patho)	PH 1.28 [Lec.-25] Describe the mechanisms of action, types, doses, side effects, indications and contraindications of the drugs used in ischemic heart disease (stable, unstable angina and myocardial infarction).	Pandemic Module (2.2 CM)	Lunch	SGL/SGT - PA16.6 DOAP - Prepare a peripheral blood smear and identify hemolytic anaemia (Certifiable)			
24-Nov-24	Sunday	Sunday	Sunday	Sunday	Sunday	Sunday			

SHRI GURU RAM RAI INSTITUTE OF MEDICAL & HEALTH SCIENCES, DEHRADUN
TIME TABLE MBBS PHASE 02, BATCH 2023 W.E.F 1ST SEPT. 2024, VENUE LT03

SUBJECT WITH COLOUR CODE

Patho	Micro	Pharma	CM	FMT	MEDICINE	SURGERY	OBGY	Pandemic	Aetcom
PA	MI	PH	CM	FM	IM	SU	OG		
Date	Day	8 AM to 9 AM	9 AM to 10 AM	10 AM TO 1 PM	1PM TO 2PM	2 PM TO 4 PM			
25-Nov-24	Monday	Lecture 24 - PA11.1 Common cytogenetic abnormalities and mutations in childhood (VI- Paed)	(L-23) MI 8.1 Miscellaneous bacterial blood stream infections: Rickettsial infections (VI Gen. Med.)	CP	Lunch	MI 8.1 Miscellaneous bacterial blood stream infections: Leptospirosis, borreliosis - SGL & Seminar ;Immunology FA			
26-Nov-24	Tuesday	SGL/SGT - PA 11.2 Common storage disorders in infancy and childhood (VI- Paed)	SGL/SGT - PA12.3 Obesity and its consequences (VI- Gen Med)	CP	Lunch	PH 4.2 (DOAP) [SGD 42] Demonstrate the effects of drugs on blood pressure (vasopressor and vaso-depressors with appropriate blockers) using computer aided learning.			
27-Nov-24	Wednesday	FMT SGL Topic-Consent. FM4.19	SDL Patho - PA-12.2 Disorders caused by protein calorie malnutrition and starvation (VI- Biochem, Paed)	CP	Lunch	SGL/SGT PA16.6 DOAP - Hemolytic Anemia ASSESSMENT			
28-Nov-24	Thursday	01st Term Patho							
29-Nov-24	Friday	01st Term Micro							
30-Nov-24	Saturday	01ST Term Pharma							
1-Dec-24	Sunday	Sunday							
2-Dec-24	Monday	01st Term Practical PA, MI, PH							
3-Dec-24	Tuesday	01st Term Practical PA, MI, PH							
4-Dec-24	Wednesday	01st Term Practical PA, MI, PH							
5-Dec-24	Thursday	01st Term Practical PA, MI, PH							
6-Dec-24	Friday	MI. 8.1 Miscellaneous bacterial blood stream infections :Brucellosis (SDL 4)	Medicine Lecture-IM9.17- Describe the indications for blood transfusion and the appropriate use of blood components IM9.18- Describe the precautions required necessary when performing a blood transfusion	CP	Lunch	PH4.2 (DOAP) [SGD 44] Demonstrate the effects of drugs on blood pressure (vasopressor and vaso-depressors with appropriate blockers) using computer aided learning.			
7-Dec-24	Saturday	Patho Lecture 25 - PA9.1 Principles & Mechanism involved in immunity (VI- Paed) (HI- Micro)	Surgery, Blood and blood components SU3.1 Describe the Indications and appropriate use of blood and blood	FAP 4 CM 2.1-2.3, 5.2	Lunch	Patho SGL/SGT PA22.1 Classify and describe blood Group systems (2-3PM) Paper discussion (3-4pm)			
8-Dec-24	Sunday	Sunday							
9-Dec-24	Monday	Pathology Lecture 26- PA9.2 a Mechanism of hypersensitivity reactions (HI- Micro)	OG6.1 - Discuss and demonstrate the clinical features of pregnancy and discuss its differential diagnosis, elaborate the principles underlying and interpret pregnancy tests V.I. With Physiology)	CP	Lunch	MI 3.3, 8.15 Bacterial causing BSI - Enteric fever etiology and pathogenesis (VI Gen Med, HI Pharma, Patho) & Seminar			

SHRI GURU RAM RAI INSTITUTE OF MEDICAL & HEALTH SCIENCES, DEHRADUN
TIME TABLE MBBS PHASE 02, BATCH 2023 W.E.F 1ST SEPT. 2024, VENUE LT03

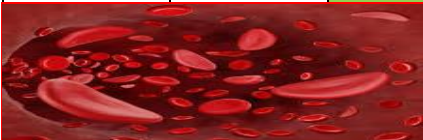
SUBJECT WITH COLOUR CODE

Patho	Micro	Pharma	CM	FMT	MEDICINE	SURGERY	OBGY	Pandemic	Aetcom
PA	MI	PH	CM	FM	IM	SU	OG		
Date	Day	8 AM to 9 AM	9 AM to 10 AM	10 AM TO 1 PM	1PM TO 2PM	2 PM TO 4 PM			
10-Dec-24	Tuesday	Pharma SDL -III PH.1.28 Describe the mechanisms of action, types, doses, side effects, indications and contraindications of the drugs used in Peripheral vascular diseases	(L-24) MI 3.3, 8.15 Bacterial causing BSI - Enteric fever Lab diagnosis ,drug resistance ,prophylaxis VI Gen Med, HI Pharma, Patho)	CP	Lunch	IM: 1.24 Describe and discuss the pharmacology of drugs including indications & contraindications in the management of heart failure including diuretics, ACE inhibitors, Beta blockers, aldosterone antagonists and cardiac glycosides. (Integration with General Medicine) [SGL- 45] : Tutorial:Antihypertensives			
11-Dec-24	Wednesday	(L-25) MI 1.1, 8.15 Viruses causing BSI- Viral hemorrhagic fever (VHF) (Dengue)	Patho Lecture 27- PA9.2b- Mechanism of hypersensitivity reactions (HI- Micro)	CP	Lunch	SGT/ SGL PA16.7 & PA22.2 Technique to perform a cross match, its indications, principles.Enumerate and demonstrate steps of compatibility Testing (2-3 pm) (VI- OBGY) PA22.4-Blood components and their clinical uses (3-4pm) (VI- Gen. Med)			
12-Dec-24	Thursday	Lecture 4 CM 3.7- Identify and describe the identifying features and life cycles of vectors of Public Health importance and their control measures (Vertical integration with Microbiology).	PH 1.29 [Lec.-26] Describe the mechanisms of action, types, doses, side effects, indications and contraindications of the drugs used in congestive heart failure.	CP	Lunch	MI 3.4, 8.15 Bacteria causing Blood stream infection (Cases/Seminar)			
13-Dec-24	6	(L-26) MI 1.1, 8.15 Viruses causing BSI- Viral hemorrhagic fever (VHF) Arboviral VHF (Chikungunya, KFD, Filovirus)	Medicine Lecture-IM4.1 Describe and discuss the febrile response and the influence of host immune status, risk factors and comorbidities on the febrile response IM4.2-Describe and discuss the influence of special populations on the febrile response including: the elderly, immune suppression, malignancy and neutropenia, HIV and travel	CP	Lunch	PH 1.30 [SGD- 47] Describe the mechanisms of action, types, doses, side effects, indications and contraindications of the antiarrhythmic drugs. Log book and Manual Assessment			
14-Dec-24	Saturday	Pharma SDL-IV PH 1.52 Describe management of common poisoning, insecticides, common sting and bites.	Surgery, Burns 1 SU4.1 Elicit document and present history in a case of Burns and perform	Research Patho, Micro, Pharma [SGD-48]	Lunch	Patho SGL/SGT PA 9.3HLA system, immune principles in transplant and mechanism of transplant rejection (2-3pm) (HI- Micro) PA 9.4 Define autoimmunity. Enumerate autoimmune disorders (VI- Gen med)(3-4pm) (HI- Micro)			

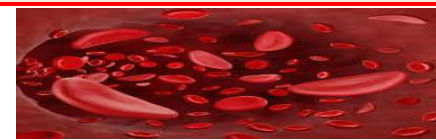
SHRI GURU RAM RAI INSTITUTE OF MEDICAL & HEALTH SCIENCES, DEHRADUN
TIME TABLE MBBS PHASE 02, BATCH 2023 W.E.F 1ST SEPT. 2024, VENUE LT03

SUBJECT WITH COLOUR CODE

Patho	Micro	Pharma	CM	FMT	MEDICINE	SURGERY	OBGY	Pandemic	Aetcom
PA	MI	PH	CM	FM	IM	SU	OG		
Date	Day	8 AM to 9 AM	9 AM to 10 AM	10 AM TO 1 PM	1PM TO 2PM	2 PM TO 4 PM			
15-Dec-24	Sunday	Sunday	Sunday	Sunday	Sunday	Sunday	Sunday	Sunday	
16-Dec-24	Monday	Pathology Lecture 28 - PA 9.5 Pathogenesis of Systemic lupus erythematosus (VI- Gen Med)	Pharma Remedial : [Lec.-27] Autonomic Nervous System	CP	Lunch	MI 1.2 ZN staining (2)/ Sample collection (SVL)			
17-Dec-24	Tuesday	PH 1.30 [SGD-49] Describe the mechanisms of action, types, doses, side effects, indications and contraindications of the antiarrhythmic dugs.	SDL Patho PA22.5 - Enumerate and describe infections transmitted by blood transfusion	CP	Lunch	PH 3.1 [SGD- 51] Write a rational, correct and legible generic prescription for a given condition and communicate the same to the patient. PH3.8 Communicate effectively with a patient on the proper use of prescribed medication.			
18-Dec-24	Wednesday	MI 1.1, 8.15 Viruses causing BSI - Viral hemorrhagic fever (VHF) (Dengue 7 Chikungunya) - Cases	Patho Lecture 29- PA22.6 Transfusion reactions and enumerate steps in the investigation of transfusion reaction (VI- Gen Med)	CP	Lunch	Patho SGL/SGT PA9.7- Pathogenesis of other common autoimmune diseases (2-3PM) (VI- Gen Med) PA22.7- Enumerate indications and describe the principles, procedure of autologous transfusion (3-4pm)			



ANEMIA MODULE
(CM, Pathology, Microbiology, Pharmacology, OBGY & Paediatrics)



19-Dec-24	Thursday	CM introduction to anemia module	MI 2.4 infections causing anemia : Hookworm	CP	Lunch	Pathology PA 13.3,13.41,14.2,14.3,15.2,15.3	
20-Dec-24	Friday	Anemia in Children (Paediatrics)	Patho PA 16.2,16.3,16.4,22.6	CP	Lunch	02 TO 3 PM (CM) 03 to 4 PM	
21-Dec-24	Saturday	OBG Anemia in Pregnancy	Pharma PH1.35 [Lec.-28]	Pandemic Module (2.2 CM)	Lunch	02 to 3 PM (Pharma) PH 1.35 [SGD-54] 03 TO 4 PM MCQ Discussion & Feedback	
22-Dec-24	Sunday	Sunday	Sunday	Sunday	Sunday	Sunday	
23-Dec-24	Monday	Winter Vacation					
24-Dec-24	Tuesday						
25-Dec-24	Wednesday						
26-Dec-24	Thursday						
27-Dec-24	Friday						
28-Dec-24	Saturday						
29-Dec-24	Sunday	Sunday	Sunday	Sunday	Sunday	Sunday	

SHRI GURU RAM RAI INSTITUTE OF MEDICAL & HEALTH SCIENCES, DEHRADUN
TIME TABLE MBBS PHASE 02, BATCH 2023 W.E.F 1ST SEPT. 2024, VENUE LT03

SUBJECT WITH COLOUR CODE

Patho	Micro	Pharma	CM	FMT	MEDICINE	SURGERY	OBGY	Pandemic	Aetcom
PA	MI	PH	CM	FM	IM	SU	OG		
Date	Day	8 AM to 9 AM	9 AM to 10 AM	10 AM TO 1 PM	1PM TO 2PM	2 PM TO 4 PM			
30-Dec-24	Monday	Pathology SGL/SGT PA7.1- Define and classify neoplasia- its characteristics gross, microscopy, biologicbehaviour and spread. Differentiate benign and maignant neoplams	FMT Lecture Topic-CPA,Workman’s Compensation Act & ESI Act FM4.8		Lunch	MI 1.1, 8.15 Viruses causing BSI-Filoviral VHF (Ebola and Marburg virus), Hantaviral - SGL & Seminar			
31-Dec-24	Tuesday	PH 1.25 [Lec.-29] Describe the mechanism/s of action, types, doses, side effects, indications and contraindications of the drugs acting on blood : anticoagulants.	SDL Patho - PA10.2 - Pathogenesis and pathology of cysticercosis (HI-Micro) (VI- Gen med)	CP	Lunch	PH 1.25 [SGD- 56] Describe the mechanism/s of action, types, doses, side effects, indications and contraindications of the drugs acting on blood: anticoagulants. Prescription Writing: CVS			
1-Jan-25	Wednesday	(L-27) MI 2.5,2.6, 8.16 Parasites causing BSI - Malaria etiopathogenesis,lifecycle	Patho Lecture 30 - PA7.2b Molecular basis of cancer	CP	Lunch	Patho SGL/SGT PA10.1 Define and describe the pathogenesis and pathology of malaria(2-3PM) Slide seminar (3-4pm)			
2-Jan-25	Thursday	Lecture 5 CM 5.3-Define and describe common nutrition related health disorders (including macro-PEM, Micro-iron, Zn, iodine, Vit. A), their control and management (Vertical Integration with General Medicine, Pediatrics and BI 8.5).Give case scenario for SDL CM 5.1	PH 1.25 [Lec.-30] Describe the mechanism/s of action, types, doses, side effects, indications and contraindications of the drugs acting on blood, antiplateletand fibrinolytic, plasma expanders.	CP	Lunch	FMT SGL/SGT/ Practical Topic- General Toxicology FM8.1, FM8.2, FM8.3, FM8.4, FM8.5,FM8.6			
3-Jan-25	Friday	(L-28) MI 2.5,2.6, 8.16 Parasites causing BSI -Malaria Lab diagnosis,treatment,prevention	Medicine Lecture-IM4.3 Discuss and describe the common causes, pathophysiology and manifestations of fever in various regions in India including bacterial, parasitic and viral causes (e.g.Dengue, Chikungunya, Typhus) IM4.4 Describe and discuss the pathophysiology and manifestations of inflammatory causes of fever	CP	Lunch	PH 1.25 [SGD- 58] Describe the mechanism/s of action, types, doses, side effects, indications and contraindications of the drugs acting on blood : antiplatelet, fibrinolytic, plasma expanders. Drug Interactions:CVS-and Blood			
4-Jan-25	Saturday	Patho Lecture 31 - PA7.2c Molecular basis of cancer	SU4.2 Describe Clinical features, Diagnose type and extent of burns andplan appropriate treatment	FAP 5 CM 2.1-2.3, 5.2	Lunch	Patho SGL/SGT PA7.2a Molecular basis of cancer (2-3PM) PA19.6-Enumerate and differentiate the causes of splenomegaly(3-4PM) (VI- Gen sur, med)			
5-Jan-25	Sunday	Sunday	Sunday	Sunday	Sunday	Sunday			

SHRI GURU RAM RAI INSTITUTE OF MEDICAL & HEALTH SCIENCES, DEHRADUN
TIME TABLE MBBS PHASE 02, BATCH 2023 W.E.F 1ST SEPT. 2024, VENUE LT03

SUBJECT WITH COLOUR CODE

Patho	Micro	Pharma	CM	FMT	MEDICINE	SURGERY	OBGY	Pandemic	Aetcom
PA	MI	PH	CM	FM	IM	SU	OG		
Date	Day	8 AM to 9 AM	9 AM to 10 AM	10 AM TO 1 PM	1PM TO 2PM	2 PM TO 4 PM			
6-Jan-25	Monday	Pathology Lecture 32 - PA7.2d Molecular basis of cancer	OG7.1(Part-I) –Describe and discuss the changes in the genital tract, cardiovascular system, respiratory, hematology, renal and gastrointestinal system in pregnancy. (V.I. With Physiology)	CP	Lunch	MI 2.5, 8.16 Parasites causing BSI- Visceral leishmaniasis (SGL)			
7-Jan-25	Tuesday	PH 1.31 [Lec.-31] Describe the mechanisms of action, types, doses, side effects, indications and contraindications of the drugs used in the management of dyslipidemias.	(L-29) MI 2.5, 8.16 Parasites causing BSI- Lymphatic filariasis (VI Gen Med, HI Patho & CM)	CP	Lunch	PH5.1 (2-3 PM) [SGD- 60] Communicate with the patient with empathy and ethics on all aspects of drug use. PH3.6 (3-4 PM) Demonstrate how to optimize interaction with pharmaceutical representative to get authentic information on drugs.			
8-Jan-25	Wednesday	MI 2.5, 8.16 Trypanosomiasis (SDL 5)	Patho Lecture 33 - PA7.3 Enumerate carcinogens and describe carcinogenesis	CP	Lunch	Patho SGL/SGT DOAP PA19.7 Identify and describe the gross specimen of enlarged spleen			
9-Jan-25	Thursday	Lecture 6 CM 5.5- Describe the methods of nutritional surveillance, principles of nutritional education and rehabilitation in the context of socio- cultural factors (Vertical Integration with General Medicine, Pediatrics) and home assignments.	PH 1.31 [Lec.- 32] Describe the mechanisms of action, types, doses, side effects, indications and contraindications of the drugs used in the management of dyslipidemias	CP	Lunch	FMT SGL/SGT/ Practical Topic- Mechanical Injuries and wounds-I FM3.4, FM3.5			
10-Jan-25	Friday	MI 2.5,2.6, 8.16 Parasites causing BSI - Malaria, visceral leishmaniasis, lymphatic filariasis(cases)	Medicine Lecture-IM4.3 Discuss and describe the common causes, pathophysiology and manifestations of fever in various regions in India including bacterial, parasitic and viral causes (e.g.Dengue, Chikungunya, Typhus) IM4.4 Describe and discuss the pathophysiology and manifestations of inflammatory causes of fever	CP	Lunch	PH 3.1 [SGD - 62] Write a rational, correct and legible generic prescription for a given Condition and communicate the same to the patient. Tutorial : Antiplatelets and Anticoagulants			
11-Jan-25	Saturday	Pharma SDL -V PH1.53 Describe heavy metal poisoning and chelating agents	Complications of burns and their management , Rehabilitation in burns , Burn contractures SU4.3 Medicolegal aspects in burn injuries	AETCOM Module 2.3 Microbiology	Lunch	Patho SGL/SGT PA7.5 Immunology and the immune response to cancer (2-3PM) PA 11.3 Pathogenesis and pathology of tumor and tumor like conditions in infancy and childhood (VI- Paed)			
12-Jan-25	Sunday	Sunday	Sunday	Sunday	Sunday	Sunday			

SHRI GURU RAM RAI INSTITUTE OF MEDICAL & HEALTH SCIENCES, DEHRADUN
TIME TABLE MBBS PHASE 02, BATCH 2023 W.E.F 1ST SEPT. 2024, VENUE LT03

SUBJECT WITH COLOUR CODE

Patho	Micro	Pharma	CM	FMT	MEDICINE	SURGERY	OBGY	Pandemic	Aetcom
PA	MI	PH	CM	FM	IM	SU	OG		
Date	Day	8 AM to 9 AM	9 AM to 10 AM	10 AM TO 1 PM	1PM TO 2PM	2 PM TO 4 PM			
13-Jan-25	Monday	Pathology Lecture 34 - PA8.1 Diagnostic role of cytology and its application in clinical care (VI- Gen Sur)	OG7.1 (Part-II) –Describe and discuss the changes in the genital tract, cardiovascular system, respiratory, hematology, renal and gastrointestinal system and other changes in pregnancy. (V.I. With Physiology)	CP	Lunch	MI 1.2 Gram Staining -3; Grand viva table (SVL) MI 8.5, 8.6 Biomedical waste management			
14-Jan-25	Tuesday	PH 1.17 [Lec.-33] Describe the mechanism/s of action, types, doses, side effects, indications and contraindications of local anesthetics.	SDL 4 CM. 5.1-Describe the common sources of various nutrients and special nutritional requirements according to age, sex, activity, physiological conditions (Vertical Integration with General Medicine, Pediatrics PE 9.1,9.5); with marks for Musuem Study and Library Assignments as applicable.	CP	Lunch	[SGD - 64] WRITTEN ASSESSMENT:CVS (PH 1.24,1.27,1.28,1.29,1.30)			
15-Jan-25	Wednesday	Microbiology Lecture/ SDL	Pathology SDL PA7.4- Effects of tumor on the host including paraneoplastic syndrome	CP	Lunch	Pathology Museum Study			
16-Jan-25	Thursday	FMT Assessment	FMT Assessment	CP	Lunch	MI 1.2 Perform & identify parasitic infections - Stool microscopy (1)			
17-Jan-25	Friday	Medicine Formative Assessment	Medicine Formative Assessment	CP	Lunch	PH 1.18 [SGD - 66] Describe the mechanism/s of action, types, doses, side effects, indications and contraindications of general anesthetics, and pre-anesthetic medications. SGD: Blood & Dyslipidemia PH 1.25,1.31,1.35			
18-Jan-25	Saturday	Surgery Formative Assessment	Surgery Formative Assessment	AETCOM Module 2.4 Pathology	Lunch	Patho SGL/SGT PA10.3- Pathogenesis and pathology of leprosy (2-3PM) (VI- Gen med) (HI- Micro) Seminar(3-4pm)			
19-Jan-25	Sunday	Sunday	Sunday	Sunday	Sunday	Sunday			
20-Jan-25	Monday	Pathology Lecture 35 - PA17.1b Etiology, pathogenesis and findings in aplastic anemia (VI- Gen med)	FMT SDL FM4.29- Demonstrate ability to communicate appropriately with media, public and doctors. FM4.30- Demonstrate ability to conduct research in pursuance to guidelines or research ethics.	CP	Lunch	Seminar/Museum visit			

SHRI GURU RAM RAI INSTITUTE OF MEDICAL & HEALTH SCIENCES, DEHRADUN
TIME TABLE MBBS PHASE 02, BATCH 2023 W.E.F 1ST SEPT. 2024, VENUE LT03

SUBJECT WITH COLOUR CODE

Patho	Micro	Pharma	CM	FMT	MEDICINE	SURGERY	OBGY	Pandemic	Aetcom
PA	MI	PH	CM	FM	IM	SU	OG		
Date	Day	8 AM to 9 AM	9 AM to 10 AM	10 AM TO 1 PM	1PM TO 2PM	2 PM TO 4 PM			
21-Jan-25	Tuesday	Patho SGL/SGT PA17.2 Indications and findings in bone marrow aspiration and biopsy (VI- Gen med)	Patho SGL/SGT Seminar		Lunch	PH 1.18 [SGD - 68] Describe the mechanism/s of action, types, doses, side effects, indications and contraindications of general anesthetics, and pre-anesthetic medications. SGD: Blood & Dyslipidemia PH 1.25,1.31,1.35			
22-Jan-25	Wednesday	(L-30) MI 1.1 , 8.15 Fungus causing BSI Systemic candidiasis	Patho Lecture 36 - PA 8.2 Basis of exfoliative cytology including the technique & stains used (VI- Gen Sur)	CP	Lunch	Patho SGL/SGT PA8.3 DOAP Observe a diagnostic cytology and its staining and interpret the specimen			
23-Jan-25	Thursday	FMT Lecture Topic: Communication between doctors, public & Media, Discuss legal, ethical issues in relation to stem cell research. FM4.9, FM4.10, FM4.11 FM4.12	PH 1.20 [Lec.-34] Describe the effects of acute and chronic ethanol intake PH 1.21 Describe the symptoms and management of methanol and ethanol poisonings.	CP	Lunch	MI 1.2 Stool microscopy (2) & FA - Blood and cardiovascular system I			
24-Jan-25	Friday	PH 1.19 [Lec.-35] Describe the mechanism/s of action, types, doses, side effects, indications and contraindications of the drugs which act on CNS: anxiolytics, sedatives & hypnotics.	MI 1.1, 8.16 Fungus causing BSI - systemic mycoses - SGL	CP	Lunch	PH 1.19 [SGD - 70] Describe the mechanism/s of action, types, doses, side effects, indications and contraindications of the drugs acting on CNS: anti-epileptics drugs. SGD: Prescription Audit			
25-Jan-25	Saturday	(L-31) MI 5.1, 5.2 Infective syndromes of central nervous system (VI Gen Med, Pedia & HI Patho)	SDL-VI PH 1.22 Describe drugs of abuse (dependence, addiction, stimulants, depressants, psychedelics, drugs used for criminal offences) PH 1.23 Describe the process and mechanism of drug deaddiction.	Pandemic Module 2.3 Microbiology	Lunch	Patho SGL/SGT PA 18.1 Causes of leukocytosis, leucopenia, lymphocytosis and leukemoid reaction (2-3pm) PA24.1- Etiology, pathogenesis, pathology and clinical features of oral cancers (3-4pm) (VI-Dentistry)			
26-Jan-25	Sunday	Sunday	Sunday			Sunday	Sunday		
27-Jan-25	Monday	Pathology Lecture 37 - PA18.2a Etiology, genetics, pathogenesis, classification and hematologic features of ALL	FMT SDL FM2.5 Discuss moment of death, modes of death - coma, asphyxia and syncope		Lunch	MI 1.2 ZN Staining-3			

SHRI GURU RAM RAI INSTITUTE OF MEDICAL & HEALTH SCIENCES, DEHRADUN
TIME TABLE MBBS PHASE 02, BATCH 2023 W.E.F 1ST SEPT. 2024, VENUE LT03

SUBJECT WITH COLOUR CODE

Patho	Micro	Pharma	CM	FMT	MEDICINE	SURGERY	OBGY	Pandemic	Aetcom
PA	MI	PH	CM	FM	IM	SU	OG		
Date	Day	8 AM to 9 AM	9 AM to 10 AM	10 AM TO 1 PM	1PM TO 2PM	2 PM TO 4 PM			
28-Jan-25	Tuesday	PH 1.19: [Lec.-36] Describe the mechanism/s of action, types, doses, side effects, indications and contraindications of the drugs acting on CNS: anti-epileptics drugs.	SDL Patho PA24.2 Etiology, pathogenesis, pathology, microbiology, clinical and microscopic features of peptic ulcer disease (VI- Gen Med)				Lunch	[SGD- 72] General anesthetics	
29-Jan-25	Wednesday	(L-32) MI 5.1, 5.2 Bacterial meningitis - Acute bacterial (pyogenic) - Neisseria meningitis, Streptococcus pneumoniae (VI Gen Med, Pedia & HI Patho)	Patho SGT/ SGL PA18.2 Etiology, genetics, pathogenesis classification, and hematologic features of AML	CP			Lunch	Patho SGL/SGT PA18.2- Etiology, genetics, pathogenesis, classification, and hematologic features of CML (2-3 PM) 19.1 - Causes and differentiating features of lymphadenopathy (3-4pm) (VI- Gen Sur)	
30-Jan-25	Thursday	Lecture 7 CM 5.5- Nutrition surveillance, social aspects of nutrition (Vertical Integration with General Medicine, Pediatrics).	PH 1.19: [Lec.-37] Describe the mechanism/s of action, types, doses, side effects, indications and contraindications of the drugs acting on CNS: anti-epileptics drugs.	CP			Lunch	Seminar/ Remedial class	
31-Jan-25	Friday	Pharmacology [Lec.-38] IM 19.8 (Integrated Learning) Discuss and describe the pharmacology, dose, side effects and interactions used in the drug therapy of Parkinson's syndrome. (Integration with General Medicine)	(L-33) MI 5.1, 5.2 Bacterial meningitis - Acute bacterial (pyogenic) Streptococcus agalactiae, Hemophilus influenzae (VI Gen Med, Pedia & HI Patho)	CP			Lunch	PH 1.19: [SGD- 74] Describe the mechanism/s of action, types, doses, side effects, indications and contraindications of the anti-psychotic drugs. SGD: Prescription writing CNS	
1-Feb-25	Saturday	Patho Lecture 38 - PA 24.4- Etiology, pathogenesis and pathologic features of carcinoma of stomach (VI- Gen Sur)	Wound healing and wound care SU5.1 Describe normal wound healing and factors affecting healing. Ing. Pathology			FAP 6 CM 2.1-2.3, 5.2	Lunch	Patho SGL/SGT PA24.6 Etiology, pathogenesis and distinguishing features of IBD (2-3pm) (VI- Gen Sur) PA19.4a Classification of CLPD and CLL (3-4pm) (VI- Gen Sur)	
2-Feb-25	Sunday	Sunday	Sunday	Sunday	Sunday	Sunday	Sunday	Sunday	Sunday
3-Feb-25	Monday	Patho Lecture 39 - PA24.7 Carcinoma colon (VI- Gen Sur)	OG8.1- Enumerate, describe and discuss the objectives of antenatal care, assessment of period gestation, screening for high risk factors.	CP			Lunch	MI 5.3, 8.15 Lab diagnosis of Acute meningitis ;HA- Identify the microbial agents causing acute (tubercular and cryptococcal meningitis) (Case based- HA), & Seminar	

SHRI GURU RAM RAI INSTITUTE OF MEDICAL & HEALTH SCIENCES, DEHRADUN
TIME TABLE MBBS PHASE 02, BATCH 2023 W.E.F 1ST SEPT. 2024, VENUE LT03

SUBJECT WITH COLOUR CODE

Patho	Micro	Pharma	CM	FMT	MEDICINE	SURGERY	OBGY	Pandemic	Aetcom
PA	MI	PH	CM	FM	IM	SU	OG		
Date	Day	8 AM to 9 AM	9 AM to 10 AM	10 AM TO 1 PM	1PM TO 2PM	2 PM TO 4 PM			
4-Feb-25	Tuesday	PH 1.19: [Lec.-39] Describe the mechanism/s of action, types, doses, side effects, indications and contraindications of the drugs which act on CNS:, antipsychotic drugs	(L-34) MI 5.3, 8.15 Microbial agents causing chronic meningitis (tubercular, spirochaetal, lymes and cryptococcal meningitis) (VI Gen Med, Pedia & HI Patho)	CP	Lunch	PH 1.19: [SGD- 75] Describe the mechanism/s of action, types, doses, side effects, indications and contraindications of the drugs which act on CNS:, anti-manic drugs PH 3.2 [SGD- 76] Perform and interpret a critical appraisal (audit) of a given prescription.			
5-Feb-25	Wednesday	(L-35) MI 5.2 Viral Encephalitis & Encephalopathy-1 Rabies (VI Gen Med, Pedia & HI Patho)	Patho Lecture 40 - PA27.1 - Distinguish arteriosclerosis/ atherosclerosis. Pathogenesis, pathology of causes and types of arteriosclerosis (VI- Gen Med)	CP	Lunch	Patho SGL/SGT PA19.4b Follicular lymphoma, DLBCL, Burkitt's and Mantle cell lymphoma (2-3pm) (VI- Gen Sur) PA24.5-Etiology, pathogenesis and pathologic features of Tuberculosis of intestine (3-4pm) (VI- Gen Sur)			
6-Feb-25	Thursday	CM Assessment	CM Assessment	CP	Lunch	FMT SGL/SGT/ Practical Topic- Mechanical injuries and wounds II FM3.3, FM8.7, FM8.8, FM8.9, FM8.10			
7-Feb-25	Friday	(L-36) MI 5.1, 8.16 Viral meningitis and viral myelitis: Poliomyelitis, coxsackievirus, and others	Medicine Lecture-IM4.3 Discuss and describe the common causes, pathophysiology and manifestations of fever in various regions in India including bacterial, parasitic and viral causes (e.g.Dengue, Chikungunya, Typhus) IM4.4 Describe and discuss the pathophysiology and manifestations of inflammatory causes of fever	CP	Lunch	[SGD -78] Drug Interactions and drug formulations:CNS			
8-Feb-25	Saturday	Patho Lecture 41 - PA27.2-Etiology, pathology, types and complications of aneurysms including aortic aneurysms (VI- Gen Med)	Wound healing and wound care SU5.2 Elicit, document and present a history in a patient presenting with wounds. SU5.3 Differentiate the various types of wounds, Lump, ulcer sinus , fistula- plan and observe	AETCOM Module 2.4 Pathology	Lunch	Patho SGL/SGT PA19.4c Pathogenesis, pathology and differentiating features of Hodgkin's and non-Hodgkin's lymphoma (2-3pm) (VI- Gen Sur) PA27.3 Etiology, types, stages, pathophysiology, pathology and complications of heart failure (3-4pm) (VI- Gen			
9-Feb-25	Sunday	Sunday	Sunday	Sunday	Sunday	Sunday			
10-Feb-25	Monday	OBG Formative Assessment	OBG Formative Assessment	CP	Lunch	MI 5.2 HSV encephalitis Slow virus and prion disease (SDL 6) & Seminar			

SHRI GURU RAM RAI INSTITUTE OF MEDICAL & HEALTH SCIENCES, DEHRADUN
TIME TABLE MBBS PHASE 02, BATCH 2023 W.E.F 1ST SEPT. 2024, VENUE LT03

SUBJECT WITH COLOUR CODE



Patho	Micro	Pharma	CM	FMT	MEDICINE	SURGERY	OBGY	Pandemic	Aetcom
PA	MI	PH	CM	FM	IM	SU	OG		
Date	Day	8 AM to 9 AM	9 AM to 10 AM	10 AM TO 1 PM	1PM TO 2PM	2 PM TO 4 PM			
11-Feb-25	Tuesday	PH 1.19: [Lec.-40] Describe the mechanism/s of action, types, doses, side effects, indications and contraindications of the drugs which act on CNS: antidepressant drugs	SDL 5 CM 5.7, 5.8- Describe food hygiene, Describe and discuss the importance and methods of food fortification and effects of additives and adulteration (CM 5.7 Horizontal Integration with Microbiology and CM 5.8 Vertical Integration with Pediatrics); with marks for Museum Study and Library Assignments as applicable.	CP	Lunch	PH 1.19: [SGD- 80] Describe the mechanism/s of action, types, doses, side effects, indications and contraindications of the drugs which act on CNS : antidepressant drugs SGD: Museum Study			
12-Feb-25	Wednesday	(L-37) MI 5.2 Viral Encephalitis and Encephalopathy Arboviral encephalitis (VI Gen Med, Pedia & HI Patho)	Patho Lecture 42 PA27.5 Epidemiology, risk factors, etiology, pathophysiology, pathology, presentations, diagnostic tests and complications of Ischaemic heart disease (VI- Gen Med)	CP	Lunch	Patho SGL/SGT PA 19.5 DOAP - Identify and describe the features of Hodgkin's lymphoma in a gross and microscopic specimen (VI- Gen Sur)			
13-Feb-25	Thursday	Lecture 8 CM 5.6- Enumerate and discuss the National Nutrition Policy, important national nutritional Programs including the Integrated Child Development Services Scheme (ICDS) (Vertical Integration with Pediatrics IM 9.15, 12.12; PE 29.5).	PH 1.19: [SGD- 81] Describe the mechanism/s of action, types, doses, side effects, indications and contraindications of the drugs which act on CNS : opioid agonists and antagonists	CP	Lunch	MI 5.1 5.2 Parasitic infections of CNS Protozoa & Helminths			
14-Feb-25	Friday	(L-38) MI 5.2 Viral Encephalitis and Encephalopathy-2 Nipah and Hendra. (VI Gen Med, Pedia & HI Patho)	Medicine Lecture-IM4.3 Discuss and describe the common causes, pathophysiology and manifestations of fever in various regions in India including bacterial, parasitic and viral causes (e.g.Dengue, Chikungunya, Typhus) IM4.4 Describe and discuss the pathophysiology and manifestations of inflammatory causes of fever	CP	Lunch	[SGD - 83]Written Assessment CNS- I PH: 1.17, 1.18, 1.20			
15-Feb-25	Saturday	[SGD- 84] PH 1.19 Describe the mechanism/s of action, types, doses, side effects, indications and contraindications of the drugs which act on CNS: opioid agonists and antagonists	[SGD- 85] PH 1.19 Describe the mechanism/s of action, types, doses, side effects, indications and contraindications of the drugs which act on CNS: drugs used for neurodegenerative disorders.	AETCOM Module 2.5 Microbiology	Lunch	Patho SGL/SGT DOAP - PA27.8- Interpret abnormalities in cardiac function testing in acute coronary syndromes (VI- Gen Med, Physio)			
16-Feb-25	Sunday	Sunday	Sunday	Sunday	Sunday	Sunday			

SHRI GURU RAM RAI INSTITUTE OF MEDICAL & HEALTH SCIENCES, DEHRADUN
TIME TABLE MBBS PHASE 02, BATCH 2023 W.E.F 1ST SEPT. 2024, VENUE LT03

SUBJECT WITH COLOUR CODE

Patho	Micro	Pharma	CM	FMT	MEDICINE	SURGERY	OBGY	Pandemic	Aetcom
PA	MI	PH	CM	FM	IM	SU	OG		

Date	Day	8 AM to 9 AM	9 AM to 10 AM	10 AM TO 1 PM	1PM TO 2PM	2 PM TO 4 PM
17-Feb-25	Monday	Pathology Lecture 43 - SEMINAR	OG8.2- Elicit document and present an obstetric history including menstrual history, last menstrual period, previous obstetric history, co-morbid conditions, past medical history and surgical history.	CP	Lunch	MI: 6.1 Infective syndromes of respiratory tract ; MI 1.2 Stool microscopy - 4

	<p>Tuberculosis Module (CM, Pathology, Microbiology, Pharmacology, Medicine, OBGY)</p>	
--	---	---

18-Feb-25	Tuesday	CM introduction to TB 8.1,8.3 to 8.6 TB (extent of problems,epidemiological indices & natural history of diseases	PA, 19.2 44 - pathogenesis and pathology of TB lymphadenites	CP	Lunch	DOAP PA 19.3 & 26.4 - Gross specimens Identify and describe the features of tuberculous lymphadenitis in a gross and microscopic specimen
19-Feb-25	Wednesday	MI 6.1,6.3,8.16 (tuberculosis etiology & pathogenesis	PH, 1.44 [Lec.-41] First-line ATT drugs, MOA, side effects and doses	CP	Lunch	PA 26.5 stages morphology microscopic appearance , & complications of TB
20-Feb-25	Thursday	IM Clinical & Radiological features of PTB, TB lymphadenitis, pleurisy TB, & TB in diabetes	PH 1.45 [Lec.-42] Drug used in MDR, XDR TB, regimens for management of TB	CP	Lunch	MI, 6.1 ,6.3,8.16 lab diagnosis and case discussion of TB
21-Feb-25	Friday	CM 8.3 NTEP	OBG Genital tuberculosis	CP	Lunch	02 TO 3 PHARMA [SGD- 87] PH 1.44 prescription writing drug interaction of antitubercular drugs 03 to 4 Assessment & Feedback
22-Feb-25	Saturday	(L-39) MI 6.1, 6.3 Bacterial lobar pneumonia: Pneumococcal pneumonia, Haemophilus influenzae pneumonia (VI Gen Med)	Pharma SDL -VII Drugs used in cough. PH 1.33	Pandemic Module (2.3 Micro)	Lunch	Patho SGL/SGT Museum Study
23-Feb-25	Sunday	Sunday	Sunday	Sunday	Sunday	Sunday
24-Feb-25	Monday	Pathology Lecture 45 - PA27.5 Etiology, pathophysiology, pathology, gross and microscopic features, criteria and complications of rheumatic fever (3-4PM) (VI- Gen Med)	FMT Lecture Topic- Medical negligence , defenses in medical negligence litigations FM4.18	CP	Lunch	MI 8.11 Demonstrate respect for patient samples sent for laboratory investigations - AETCOM

SHRI GURU RAM RAI INSTITUTE OF MEDICAL & HEALTH SCIENCES, DEHRADUN
TIME TABLE MBBS PHASE 02, BATCH 2023 W.E.F 1ST SEPT. 2024, VENUE LT03

SUBJECT WITH COLOUR CODE

Patho	Micro	Pharma	CM	FMT	MEDICINE	SURGERY	OBGY	Pandemic	Aetcom
PA	MI	PH	CM	FM	IM	SU	OG		
Date	Day	8 AM to 9 AM	9 AM to 10 AM	10 AM TO 1 PM	1PM TO 2PM	2 PM TO 4 PM			
25-Feb-25	Tuesday	Patho lecture 46 PA27.6 -Etiology, pathophysiology, pathology, gross and microscopic features, diagnosis and complications of infective endocarditis (VI- Gen Med) (HI- Micro)	Patho SGL/SGT SEMINAR	CP	Lunch	PH3.3 [SGD- 89] Perform a critical evaluation of the drug promotional literature. SGD: Library Assessment			
26-Feb-25	Wednesday	PH 1.32 [Lec.-43] Describe the mechanism/s of action, types, doses, side effects, indications and contraindications of drugs used in bronchial asthma and COPD.	Pathology SDL PA 21.1 Normal Hemostasis	CP		Pharmacology DOAP [SGD-86]			
27-Feb-25	Thursday	FMT Lecture FM4.20 Describe therapeutic privilege, Malingering, Therapeutic Misadventure, Professional Secrecy, Human Experimentation	PH 1.42 [Lec.-44] Describe general principles of chemotherapy.	CP	Lunch	MI 6.1, 6.3 Bacterial lobar pneumonia: Pneumococcal pneumonia, Haemophilus influenzae pneumonia and others (Cases/HA) & Seminar & FA - CNS			
28-Feb-25	Friday	PH 1.42 [Lec.-45] Describe general principles of chemotherapy.	MI 6.1, 6.3 Bacterial Atypical (Interstitial) Pneumonia: Mycoplasma, Chlamydia, Legionella and others (SGL)	CP	Lunch	[SGD- 91]WRITTEN ASSESSMENT (CNS- II) PH: 1.19			
1-Mar-25	Saturday	Patho Lecture 47 PA27.7- Etiology, pathophysiology, pathology, gross and microscopic features, diagnosis and complications of pericarditis and pericardial effusion (VI- Gen Med)	Wound healing and wound care SU5.3 Differentiate the various types of wounds, Lump, ulcer sinus , fistula-continued SU5.4 Discuss medico legal aspects of wounds	FAP 7 CM 2.1-2.3, 5.2, 5.4; Case Scenario for SDL CM 7.7	Lunch	Patho SGL/SGT PA27.9 Etiology, types, pathophysiology, pathology, diagnosis and complications of cardiomyopathies (2-3PM) (VI- Gen Med, Physio) PA33.1 Etiology, pathogenesis, manifestations, radiologic, morphologic features and complications of			
2-Mar-25	Sunday	Sunday	Sunday	Sunday	Sunday	Sunday			
3-Mar-25	Monday	Pathology Lecture 48 - PA 27.10 Etiology, pathophysiology, pathology features and complications of syphilis on the cardiovascular system (VI- Gen Med) (HI- Micro)	OG8.3(Part-I)- Describe, demonstrate, document and perform an obstetrical examination including general and abdominal examination	CP	Lunch	MI 6.1, 6.3, 8.16 Non - tubercular mycobacteria (SGL)/ Museum Visit			

SHRI GURU RAM RAI INSTITUTE OF MEDICAL & HEALTH SCIENCES, DEHRADUN
TIME TABLE MBBS PHASE 02, BATCH 2023 W.E.F 1ST SEPT. 2024, VENUE LT03

SUBJECT WITH COLOUR CODE

Patho	Micro	Pharma	CM	FMT	MEDICINE	SURGERY	OBGY	Pandemic	Aetcom
PA	MI	PH	CM	FM	IM	SU	OG		
Date	Day	8 AM to 9 AM	9 AM to 10 AM	10 AM TO 1 PM	1PM TO 2PM	2 PM TO 4 PM			
4-Mar-25	Tuesday	PH 1.43 [Lec.-46] Describe and discuss the rational use of antimicrobials including antibiotic stewardship program.	(L-40) MI 6.1, 6.2,6.3 Myxovirus Infections of respiratory tract: Influenza (VI Gen Med)	CP	Lunch	PH: 5.5 (DOAP) [SGD- 93] Demonstrate and understanding of the caution in prescribing drugs likely to produce dependence and recommend the line of management. PH: 5.6 Demonstrate ability to educate public and patients about various aspects of drug use including drug dependence and OTC drugs.			
5-Mar-25	Wednesday	(L-41) MI 6.1, 6.2,6.3 Myxovirus Infections of respiratory tract: parainfluenza, mumps (VI Gen Med)	Patho Lecture 49 - PA 20.1 - Describe the features of plasma cell myeloma (2-3pm)	CP	Lunch	Patho SGL/SGT 2-4 PM - PA 20.1 DOAP - Lab Diagnosis of MM - Case scenarios of MM & other plasma cell dyscrasias			
6-Mar-25	Thursday	Lecture 9 CM 7.1- Define Epidemiology and describe and enumerate the principles, concepts and uses (Vertical Integration with General Medicine).	PH 1.43 [Lec.-47] Describe and discuss the rational use of antimicrobials including antibiotic stewardship program.-Beta Lactam Antibiotics-I	CP	Lunch	FMT SGL/SGT/ Practical Topic- Mechanical injuries and wounds-III FM3.6,FM3.7,FM3.8			
7-Mar-25	Friday	(L-42) MI 6.1, 6.3, 4.3 Respiratory Infections due to non-fermenting gram-negative bacilli: Pseudomonas, Acinetobacter, Burkholderia and Others (VI Gen Med., DVL & Gen Surgery)	Medicine Lecture-IM4.3 Discuss and describe the common causes, pathophysiology and manifestations of fever in various regions in India including bacterial, parasitic and viral causes (e.g.Dengue, Chikungunya, Typhus) IM4.4 Describe and discuss the pathophysiology and manifestations of inflammatory causes of fever	CP	Lunch	[Integrated Learning] [SGD - 95] DR10.3 (Beta Lactam Antibiotics-II) Enumerate the indications and describe the pharmacology, administration and adverse reaction of pharmacotherapies for syphilis. (Integration with Dermatology) IM1.27Describe and discuss the role of penicillin prophylaxis in the prevention of rheumatic heart disease. (Integration with General medicine)			
8-Mar-25	Saturday	Patho Lecture 50 PA33.5 Etiology, immunology, pathogenesis, manifestations, radiologic and laboratory features, diagnostic criteria and complications of rheumatoid arthritis (VI- Gen Med)	Surgical infections SU6.1 Define and describe the aetiology and pathogenesis of surgical Infections- Acute infections -Cellulitis, abscess, carbuncle, erysipelas. Ing Microbiology	AETCOM Module 2.5 Microbiology	Lunch	Patho SGL/SGT PA 26.3A -Etiology, types, pathogenesis, stages, morphology and complications of OAD and bronchiectasis(2-3PM) (VI- Gen Med, Physio) (HI- Micro) PA33.2A- Etiology, pathogenesis, manifestations, radiologic, morphology, complications and metastases of bone tumors (3-4PM) (VI- Ortho)			
9-Mar-25	Sunday	Sunday	Sunday	Sunday	Sunday	Sunday			

SHRI GURU RAM RAI INSTITUTE OF MEDICAL & HEALTH SCIENCES, DEHRADUN
TIME TABLE MBBS PHASE 02, BATCH 2023 W.E.F 1ST SEPT. 2024, VENUE LT03

SUBJECT WITH COLOUR CODE

Patho	Micro	Pharma	CM	FMT	MEDICINE	SURGERY	OBGY	Pandemic	Aetcom
PA	MI	PH	CM	FM	IM	SU	OG		
Date	Day	8 AM to 9 AM	9 AM to 10 AM	10 AM TO 1 PM	1PM TO 2PM	2 PM TO 4 PM			
10-Mar-25	Monday	Pathology Lecture 51 - PA33.2B- Classification, etiology, pathogenesis, manifestations, radiology, morphology, complications and metastases of bone tumors (VI- Ortho)	OG8.3(Part-II)- Describe, fetus in utero (attitude position presentation, lie, etc)	CP	Lunch	MI 6.2 MI 6.3 Identify the common etiologic agents of upper respiratory tract infections (Gram staining- I) & MI 6.1, 6.2,6.3 Myxovirus Infections of respiratory tract: respiratory syncytial virus and others			
11-Mar-25	Tuesday	PH 1.43 [Lec.-48] Beta Lactam Antibiotics-III Describe and discuss the rational use of antimicrobials including antibiotic stewardship program.	SDL 6 CM 7.7 Describe and demonstrate the steps in the Investigation of an epidemic of communicable disease and describe the principles of control measures (Vertical Integration with General Medicine and Horizontal Integration with Microbiology); with marks for Musuem Study and Library Assignments as applicable.	CP	Lunch	PH 1.43 [SGD- 97] (Sulfonamides)Describe and discuss the rational use of antimicrobials including antibiotic stewardship program. Revision: ADRs			
12-Mar-25	Wednesday	(L-43) MI 6.1 Coronavirus infections including COVID-19 (VI Gen Med)	Patho Lecture 52 Seminar	CP	Lunch	Patho SGL/SGT PA 26.3B Etiology, types, pathogenesis, stages, morphology, complications and evaluation of OAD and bronchiectasis (2-3PM) (VI- Gen Med, physio) (HI- Micro) PA33.4 Etiology, pathogenesis, manifestations, radiologic and morphologic features, complications of Paget's disease of the bone(3-4PM) (VI- Ortho)			
13-Mar-25	Thursday	Pathology lecture 52 PA 33.3A Classification, etiology, pathogenesis, manifestations, radiology, morphology, complications and metastases of soft tissue tumors (VI- Ortho)	Pharmacology Lecture/ [SGD- 98]	CP	Lunch	Microbiology : Seminar			
14-Mar-25	Friday	Holi							
15-Mar-25	Saturday	Patho Lecture 53 - PA 33.3B Etiology, pathogenesis, manifestations, radiologic,morphologic features and complications and metastases of soft tissue tumors (VI- Ortho)	SU6.1Surgical infections contd Gas gangrene , tetanus . Surgical infections Chronic infections- Tuberculosis , Actinomycosis , Leprosy, syphilis	AETCOM Module 2.6 Pathology	Lunch	Patho SGL/SGT PA 21.1 Normal Hemostasis and screening tests for clotting disorders(2-3pm) PA 26.5 Etiology, types, exposure, environmental influence, pathogenesis, stages, morphology, microscopic appearance and complications of Occupational lung disease (3-4pm) (VI- Gen Med, CM)			
16-Mar-25	Sunday	Sunday	Sunday	Sunday	Sunday	Sunday	Sunday	Sunday	Sunday
17-Mar-25	Monday	Pathology Lecture 54 - PA 21.2A Classification, Etiology, pathogenesis and pathology of vascular and platelet disorders including ITP (VI- Paed)	OG8.4 - Describe, and demonstrate clinical monitoring of maternal and fetal well being	CP	Lunch	MI 6.3 Identify the common etiologic agents of lower respiratory tract infections (Gram & ZN staining- I) , MI 8.5, 8.6 Biomedical waste management			

SHRI GURU RAM RAI INSTITUTE OF MEDICAL & HEALTH SCIENCES, DEHRADUN
TIME TABLE MBBS PHASE 02, BATCH 2023 W.E.F 1ST SEPT. 2024, VENUE LT03

SUBJECT WITH COLOUR CODE

Patho	Micro	Pharma	CM	FMT	MEDICINE	SURGERY	OBGY	Pandemic	Aetcom
PA	MI	PH	CM	FM	IM	SU	OG		
Date	Day	8 AM to 9 AM		9 AM to 10 AM		10 AM TO 1 PM	1PM TO 2PM	2 PM TO 4 PM	
18-Mar-25	Tuesday	PH 1.43 [Lec.-49] (Fluroquinolones) Describe and discuss the rational use of antimicrobials including antibiotic stewardship program.		SDL Patho PA26.2 Etiology, gross and microscopic appearance and complications of lung abscess (VI- Gen Med) (HI- Micro)		CP	Lunch	PH 1.43 [SGD - 100] (Tetracyclines and Chloramphenicol) Describe and discuss the rational use of antimicrobials including antibiotic stewardship program. SGD: Beta Lactam Antibiotics PH1.43	
19-Mar-25	Wednesday	MI 6.1 Pertussis (Bordetella pertussis) SDL-7		Patho Lecture 55 - PA21.2 B Etiology, pathogenesis and pathology of vascular and platelet disorders including TTP and HUS (VI- Paed)		CP	Lunch	Patho SGL/SGT PA 26.1 Etiology, types, pathogenesis, stages, morphology and complications of pneumonia (2-3PM) (VI- Gen med) (HI- Micro) PA21.4 DIC, its laboratory findings and diagnosis (VI- Gen Med) (3-4PM)	
20-Mar-25	Thursday	FMT Lecture FM13.2- Describe medico-legal aspects of poisoning in Workman's Compensation Act. FM4.21 Describe Products liability and Medical Indemnity Insurance.		PH 1.43 [Lec.-50] (Aminoglycosides) Describe and discuss the rational use of antimicrobials including antibiotic stewardship program.		CP	Lunch	MI 6.2, 6.3 Influenza and COVID-19 (Case): Seminar	
21-Mar-25	Friday	(L-44) MI 6.1, 6.2 Parasitic Infections of Respiratory Tract: Paragonimiasis and others (VI Gen Med)		Medicine Lecture-IM4.3 Discuss and describe the common causes, pathophysiology and manifestations of fever in various regions in India including bacterial, parasitic and viral causes (e.g. Dengue, Chikungunya, Typhus) IM4.4 Describe and discuss the pathophysiology and manifestations of inflammatory causes of fever		CP	Lunch	[SGD- 102] PH 1.43 (Macrolides, Glycopeptides, Lincosamides) Describe and discuss the rational use of antimicrobials including antibiotic stewardship program. SGD: Aminoglycosides, Fluoroquinolones	
22-Mar-25	Saturday	(L-45) MI 6.1, 6.2 Fungal Infections of Respiratory Tract: Zygomycosis, aspergillosis, pneumocystosis and others		SDL -VIII PH 1.47 Describe the mechanisms of action, types, doses, side effects, indications and contraindications of the drugs used in Intestinal helminthiasis.		Pandemic Module 2.4 CM	Lunch	Patho SGL/SGT PA26.6a Etiology, types, exposure, pathology, pathogenesis, stages, morphology, microscopic appearance, metastases and complications of tumors of the lung and pleura (2-3PM) (VI- Gen Med) PA 21.3 Describe clotting disorders Hemophilias A & B (3-4pm) (VI- Gen Med)	

SHRI GURU RAM RAI INSTITUTE OF MEDICAL & HEALTH SCIENCES, DEHRADUN
TIME TABLE MBBS PHASE 02, BATCH 2023 W.E.F 1ST SEPT. 2024, VENUE LT03

SUBJECT WITH COLOUR CODE

Patho	Micro	Pharma	CM	FMT	MEDICINE	SURGERY	OBGY	Pandemic	Aetcom
PA	MI	PH	CM	FM	IM	SU	OG		
Date	Day	8 AM to 9 AM	9 AM to 10 AM	10 AM TO 1 PM	1PM TO 2PM	2 PM TO 4 PM			
23-Mar-25	Sunday	Sunday	Sunday	Sunday	Sunday	Sunday	Sunday	Sunday	Sunday
24-Mar-25	Monday	Pathology Lecture 56 - PA21.3 VWD and differentiate platelet from clotting disorders based on the clinical and hematologic features (VI- Gen Med)	(L-46) MI 7.1, 7.3 Infective Syndromes of Urinary Tract -I • Bacterial infections: Enterobacteriaceae, Enterococcus and others (VI Gen Surgery, Gen Med)	CP	Lunch	MI 7.1, 7.3 (cases of UTI: /HA) & MI 7.1,7.3 Infective Syndromes of Urinary Tract-II Viral (BK virus) and fungal infections (VI Gen. Surgery, Gen Med) ; FA Respiratory infections			
25-Mar-25	Tuesday	Patho SGL/SGT PA 26.7- Etiology, types, exposure, pathogenesis, morphology, microscopic appearance and complications of mesothelioma(VI- Gen Med, CM)	Patho SGL/SGT PA21.5 Role of Vitamin K In coagulation and monitoring of Vitamin K antagonists (VI- Gen Med)	CP	Lunch	[SGD- 104] PH 1.47 Describe the mechanisms of action, types, doses, side effects, indications and contraindications of the drugs used in Malaria and Kala-Azar,			
26-Mar-25	Wednesday	(L-47) MI 7.1,7.3 Infective Syndromes of Urinary Tract-II parasitic (Schistosoma haematobium) (VI Gen. Surgery, Gen Med)	Remedial Pharma PH 1.47 [Lec.-51] Describe the mechanisms of action, types, doses, side effects, indications and contraindications of the drugs used in Malaria and Kala-Azar,	CP	Lunch	Patho SGL/SGT (2-3pm) SVL			
27-Mar-25	Thursday	FMT Lecture FM4.27- Describe and discuss Ethical Guidelines for Biomedical Research on Human Subjects & Animals. FM4.28- Medical Council of India	PH 1.47 [Lec.-52] Describe the mechanisms of action, types, doses, side effects, indications and contraindications of the drugs used in Amebiasis .	CP	Lunch	MI 1.2 Stool Microscopy-5 MI 7.2 Infective Syndromes of Genital Tract -I - Classification of sexually-transmitted infections Ulcerative Genital Disease: lymphogranuloma venerum, granuloma inguinale, soft chancre and genital herpes (VI DVL & Obs gynae)			
28-Mar-25	Friday	PH: 1.48 [Lec.-53] Describe the mechanisms of action, types, doses, side effects, indications and contraindications of the drugs used in UTI/ STD.	MI 7.2 Infective Syndromes of Genital Tract -II - Classification of sexually-transmitted infections Ulcerative Genital Disease: Syphilis,(VI DVL & Obs gynae) - SGL	CP	Lunch	[SGD- 106] PH 1.46 Describe the mechanisms of action, types, doses, side effects, indications and contraindications of anti-leprotic drugs. Revision: Clinical Pharmacology			

SHRI GURU RAM RAI INSTITUTE OF MEDICAL & HEALTH SCIENCES, DEHRADUN
TIME TABLE MBBS PHASE 02, BATCH 2023 W.E.F 1ST SEPT. 2024, VENUE LT03

SUBJECT WITH COLOUR CODE

Patho	Micro	Pharma	CM	FMT	MEDICINE	SURGERY	OBGY	Pandemic	Aetcom
PA	MI	PH	CM	FM	IM	SU	OG		

Date	Day	8 AM to 9 AM	9 AM to 10 AM	10 AM TO 1 PM	1PM TO 2PM	2 PM TO 4 PM
29-Mar-25	Saturday	Pharma SGL/[SGD- 107] [Integrated Learning] DR 7.3 Describe Pharmacology & action of antifungal system & topical agents side effect of antifungal therapy (integration with dermatology)	Pharma SGL/[SGD- 108] PH1.62 Describe and discuss antiseptics and disinfectants	Pandemic Module 2.4 CM	Lunch	Patho SGL/SGT PA9.6 Pathogenesis and pathology of HIV and AIDS (2-3PM) SEMINAR (3-4pm)
30-Mar-25	Sunday	Sunday	Sunday	Sunday	Sunday	Sunday
31-Mar-25	Monday	Eid ul Fitar				
1-Apr-25	Tuesday	[Lec.-54] [Integrated Learning] DR 7.3 Describe Pharmacology & action of antifungal system & topical agents side effect of antifungal therapy (integration with dermatology)	(L-48) MI 7.2 Infective Syndromes of Genital Tract -II Urethritis: Gonorrhoea and non-gonococcal urethritis (VIDVL & Obs gynae)	CP	Lunch	[SGD- 110] PH 1.43 (Antiviral drugs) Describe and discuss the rational use of antimicrobials including antibiotic stewardship program. Tutorial: Antifungal and antimalarial drugs



HIV Module
(CM, Pathology, Microbiology, Pharmacology, Medicine, OBGY)



2-Apr-25	Wednesday	HIV Module CM	HIV Module Microbiology MI 2.7 , 8.15 Viruses causing BSI - HIV/AIDS (Morphology & Pathogenesis)	CP	Lunch	HIV Module Microbiology MI 2.7 , 8.15 Viruses causing BSI - HIV/AIDS (counseling & lab diagnosis)
3-Apr-25	Thursday	HIV Module Pathology	HIV Module [Lec.-55] PH 1.48 Pharmacology	CP	Lunch	HIV Module Microbiology(visit to ICTC, role play)
4-Apr-25	Friday	HIV Module [Lec.-56] PH 1.48 Pharmacology	HIV Module Pathology	CP	Lunch	HIV Module [SGD-112] PH 1.48 Prescriptions writing and Drug Interactions Pharmacology
5-Apr-25	Saturday	HIV Module Medicine	HIV Module OBGY	FAP 8 CM 2.1-2.3, 5.2, 5.4; Case Scenario for SDL CM 7.7	Lunch	HIV Module Microbiology Assessment & Feedback
6-Apr-25	Sunday	Sunday	Sunday	Sunday	Sunday	Sunday

SHRI GURU RAM RAI INSTITUTE OF MEDICAL & HEALTH SCIENCES, DEHRADUN
TIME TABLE MBBS PHASE 02, BATCH 2023 W.E.F 1ST SEPT. 2024, VENUE LT03

SUBJECT WITH COLOUR CODE

Patho	Micro	Pharma	CM	FMT	MEDICINE	SURGERY	OBGY	Pandemic	Aetcom
PA	MI	PH	CM	FM	IM	SU	OG		
Date	Day	8 AM to 9 AM	9 AM to 10 AM	10 AM TO 1 PM	1PM TO 2PM	2 PM TO 4 PM			
7-Apr-25	Monday	Pathology Lecture 57 - PA 28.1 & 28.2- Normal histology of the kidney and Define, classify and distinguish the clinical syndromes of Renal failure	OG 8.6- Assess and council a patient in a simulated environmrnt regarding appropriate nutrition in pregnancy. OG8.7- Enumerate the indications for and types of vaccination in pregnancy.	CP	Lunch	MI 7.2 Other genital infections common to both sex(Genital TB , Anorectal Lesions) SGL & MI 7.1, 7.2 Laboratory diagnosis of STI (case/HA) ; Seminar			
8-Apr-25	Tuesday	PH 1.49 [Lec.-57] Describe mechanism of action, classes, side effects, indications and contraindications of anticancer drugs.	SDL 7 CM 11.2- Describe the role, benefits and functioning of the employee state insurance scheme (No integration); with marks for Musuem Study and Library Assignments as applicable.	CP	Lunch	[SGD- 114] Revision: Pharmacokinetic and Pharmacodynamic exercises			
9-Apr-25	Wednesday	(L-49) MI 3.1 Introduction to Gastrointestinal infective syndromes (VI Gen. Med, Paedia & HI Patho)	Patho Lecture 58 - PA 28.2&28.4- Etiology, pathogenesis, pathology, morphology, clinical, laboratory and urinary findings, complications of acute and chronic renal failure (VI- Gen Med)	CP	Lunch	Patho SGL/SGT PA 28.5A Define and classify glomerular diseases. Disuss glomerulonephritis (2-3pm) (VI- Gen Med, Physio) PA29.1 - Classify testicular tumors- pathogenesis, pathology, presenting and distinguishing features, diagnostic tests, progression and spread (VI- Gen Sur) (3-4 PM)			
10-Apr-25	Thursday	Mahabir Jayanti							
11-Apr-25	Friday	(L-50) MI 3.1 Cholera, halophilic Vibrio and Aeromonas infections (VI Gen Med., Paedia & HI Patho)	Medicine Lecture-IM4.3 Discuss and describe the common causes, pathophysiology and manifestations of fever in various regions in India including bacterial, parasitic and viral causes (e.g.Dengue, Chikungunya, Typhus) IM4.4 Describe and discuss the pathophysiology and manifestations of inflammatory causes of fever	CP	Lunch	PH 1.49 [SGD- 116] Describe mechanism of action, classes, side effects, indications and contraindications of anticancer drugs. Log book and manual assessment			
12-Apr-25	Saturday	Patho Lecture 59 - PA29.2 Pathogenesis, pathology, presenting features, diagnostic tests, progression and spread of carcinoma of the penis (VI- Gen Sur)	Surgical audit and research SU7.1 Describe the Planning and conduct of Surgical audit . Ing Community Medicine	AETCOM Module 2.6 Pathology	Lunch	Patho SGL/SGT PA29.3& PA29.5 Pathogenesis, pathology, hormonal dependency, presenting features, urologic findings & diagnostic tests of BPH & etiology, pathogenesis, pathology and progression of prostatitis(2-3pm) (VI- Gen Sur) PA 28.5B Define and classify glomerular diseases. Disuss glomerulonephritis (VI- Gen Med, Physio) (3-4PM)			
13-Apr-25	Sunday	Sunday	Sunday	Sunday	Sunday	Sunday	Sunday	Sunday	Sunday

SHRI GURU RAM RAI INSTITUTE OF MEDICAL & HEALTH SCIENCES, DEHRADUN
TIME TABLE MBBS PHASE 02, BATCH 2023 W.E.F 1ST SEPT. 2024, VENUE LT03

SUBJECT WITH COLOUR CODE

Patho	Micro	Pharma	CM	FMT	MEDICINE	SURGERY	OBGY	Pandemic	Aetcom
PA	MI	PH	CM	FM	IM	SU	OG		
Date	Day	8 AM to 9 AM	9 AM to 10 AM	10 AM TO 1 PM	1PM TO 2PM	2 PM TO 4 PM			
14-Apr-25	Monday	Pathology Lecture PA 28.5C Define and classify glomerular diseases. Discuss glomerulonephritis (VI- Gen Med, Physio)	PH 1.49 [SGD- 117] TUTORIAL : Describe mechanism of action, classes, side effects, indications and contraindications of anticancer drugs.					Pathology Seminar	
15-Apr-25	Tuesday	PH 1.50 [Lec.-58] Describe mechanisms of action, types, doses, side effects, indications and contraindications of immune-modulators and management of organ transplant rejection.	SDL Patho kidney PA28.12- Cystic diseases of	CP			Lunch	2 - 3 PM [SGD- 119] (Integrated Learning) IM 15.15 Describe and enumerate the indications, pharmacology and side effects of pharmacotherapy of acid peptic disease including Helicobacter pylori. (Integration with General medicine) 3 - 4 PM PE 24.5 Discuss the role of antibiotics, antispasmodics, anti-secretory drugs, probiotics, anti- emetics in acute diarrheal diseases. (Integration with Paediatrics)	
16-Apr-25	Wednesday	(L-51) MI 3.1 Diarrheagenic E. coli, shigellosis (VI Gen Med. & Paedia)	Patho Lecture 60 - PA28.5-D PA 28.5C Define and classify glomerular diseases. Discuss glomerulonephritis (VI- Gen Med, Physio)	CP			Lunch	Patho SGL/SGT PA 29.4 Pathogenesis, pathology, hormonal dependency presenting features, diagnostic tests, progression and spread of carcinoma of the prostate (2-3pm) (VI- Gen Surg) PA 35.2 - Classification, etiology, genetics, pathogenesis, pathology, presentation sequelae and complications of CNS tumors (3-4 PM) (VI- Paed)	

SHRI GURU RAM RAI INSTITUTE OF MEDICAL & HEALTH SCIENCES, DEHRADUN
TIME TABLE MBBS PHASE 02, BATCH 2023 W.E.F 1ST SEPT. 2024, VENUE LT03

SUBJECT WITH COLOUR CODE

Patho	Micro	Pharma	CM	FMT	MEDICINE	SURGERY	OBGY	Pandemic	Aetcom
PA	MI	PH	CM	FM	IM	SU	OG		
Date	Day	8 AM to 9 AM	9 AM to 10 AM	10 AM TO 1 PM	1PM TO 2PM	2 PM TO 4 PM			
17-Apr-25	Thursday	Lecture 10 CM 7.2-Enumerate, describe and discuss the modes of transmission and measures for prevention and control of communicable and non-communicable diseases (Vertical Integration with General Medicine).	PH 1.34 [Lec.-59] Describe the mechanism/s of action, types, doses, side effects, indications and contraindications of the drugs used as below: 1. Acid-peptic disease & GERD 2. Antiemetic and prokinetics 3.Inflammatory Bowel Disease 4. Irritable Bowel Disorders, biliary and pancreatic diseases.	CP	Lunch	MI 3.5 Food poisoning: S. aureus, Bacillus cereus, Clostridium botulinum ; MI 3.1 Nontyphoidal salmonellosis and yersiniosis(SGL)			
18-Apr-25	Friday	Good Friday							
19-Apr-25	Saturday	(L-52) MI 3.1 Shigellosis (VI Gen Med. & Paedia)	Pharma SDL -IX PH:1.34 Describe the mechanism/s of action, types, doses, side effects, indications and contraindications of the drugs used as Antidiarrheal and Laxatives Time: 10: 00 AM to 01:00 PM Pandemic Module 2.5 Pharma	Pandemic Module 2.5 Pharma	Lunch	Patho SGL/SGT PA35.1 Describe the etiology, types and pathogenesis, differentiating factors, CSF findings in meningitis (2-3PM) PA28.5D Seminar- glomerulonephritis(3-4pm)			
20-Apr-25	Sunday	Sunday	Sunday	Sunday	Sunday	Sunday	Sunday	Sunday	Sunday
21-Apr-25	Monday	Pathology Lecture 61 - PA 28.6 Etiology, pathogenesis, pathology, laboratory, urinary findings, progression and complications of IgA nephropathy (VI- Gen Med)	OG8.8 - Enumerate the indications and describe the investigations including the use of Ultrasound in the initial assessment and monitoring in pregnancy.	CP	Lunch	MI 3.2 Dysentery (Shigellosis), diarrhea (NTS, cholera) (Cases/HA) & MI 3.1 MI 3.6 Helicobacter, Campylobacter & Clostridioides difficile infections - (VI Gen Med., Paedia & HI Pharma, Patho) - SGL ; FA (STI) ; Seminar			
22-Apr-25	Tuesday	PH 1.34 [Lec.-60] Describe the mechanism/s of action, types, doses, side effects, indications and contraindications of the drugs used as below: 1. Acid-peptic disease & GERD 2. Antiemetic and prokinetics 3.Inflammatory Bowel Disease 4. Irritable Bowel Disorders, biliary and pancreatic diseases.	MI 3.1 Intestinal Protozoan Infections -Entamoeba histolytica (SGL)	CP	Lunch	PH.2.2 [SGD-121] (DOAP) Prepare oral rehydration solution from ORS packet and explain its use.			

SHRI GURU RAM RAI INSTITUTE OF MEDICAL & HEALTH SCIENCES, DEHRADUN
TIME TABLE MBBS PHASE 02, BATCH 2023 W.E.F 1ST SEPT. 2024, VENUE LT03

SUBJECT WITH COLOUR CODE

Patho	Micro	Pharma	CM	FMT	MEDICINE	SURGERY	OBGY	Pandemic	Aetcom
PA	MI	PH	CM	FM	IM	SU	OG		
Date	Day	8 AM to 9 AM	9 AM to 10 AM	10 AM TO 1 PM	1PM TO 2PM	2 PM TO 4 PM			
23-Apr-25	Wednesday	(L-53) MI 3.1 Intestinal Protozoan Infections - II: Giardiasis & Coccidian infections	Patho Remedial Seminar	CP	Lunch	Patho SGL/SGT PA35.3 DOAP Identify the etiology of meningitis based on given CSF parameters (VI- Gen med) (HI-Micro)			
24-Apr-25	Thursday	02ND Term Patho							
25-Apr-25	Friday	2nd Term Micro							
26-Apr-25	Saturday	2nd Term Pharma							
27-Apr-25	Sunday	Sunday							
28-Apr-25	Monday	Practical PA, MIC, Ph							
29-Apr-25	Tuesday	Practical PA, MIC, Ph							
30-Apr-25	Wednesday	Practical PA, MIC, Ph							
1-May-25	Thursday	Practical PA, MIC, Ph							
2-May-25	Friday	(L-54) MI 3.1 Intestinal Helminthic Infections-1• Intestinal cestode infections:Taenia, Hymenolepis (VI Gen Med. , Paedia & HI Patho)	Medicine Lecture-IM4.3 Discuss and describe the common causes, pathophysiology and manifestations of fever in various regions in India including bacterial, parasitic and viral causes (e.g.Dengue, Chikungunya, Typhus) IM4.4 Describe and discuss the pathophysiology and manifestations of inflammatory causes of fever	CP	Lunch	IM 15.14 [SGD- 123] Describe and enumerate the indications, pharmacology and side effects of pharmacotherapy of pressor used in the treatment of Upper GI bleed. (Integration with General medicine) IM 14.13Describe and enumerate the indications, pharmacology and side effects of pharmacotherapy for obesity. (Integration with General medicine)			
3-May-25	Saturday	Patho Lecture 62 PA28.7 Enumerate and describe the findings in glomerular manifestations of systemic disease (VI- Gen Med)	Surgery- Ethics in surgery SU8.1 Describe the principles of Ethics as it pertains to General Surgery, Ing. Forensic Medicine, AETCOM SU8.2 Demonstrate Professionalism and empathy to the patient	FAP 9 CM 2.1-2.3, 5.2	Lunch	Patho SGL/SGT PA35.3 DOAP Identify the etiology of meningitis based on given CSF parameters ASSESSMENT and Pzaaperv discussion			
4-May-25	Sunday	Sunday	Sunday	Sunday	Sunday	Sunday	Sunday	Sunday	Sunday
5-May-25	Monday	Pathology Lecture 63 PA28.8&28.9- Classify diseases affecting the tubules, interstitium. Etiology, pathogenesis, pathology, laboratory, urinary findings, progression and complications of acute tubular necrosis (VI- Gen Med)	OG9.1 -Classify, define and discuss the aetiology and management of abortions including threatened, incomplete, inevitable, missed and septic abortion .	CP	Lunch	MI 1.2 Stool microscopy 5 & MI 3.2, 1.2 Intestinal amoebiasis, giardiasis, intestinal coccidian parasites (Cases/HA) & MI 3.1 Intestinal Helminthic Infections-2• Diphyllobothrium and others (SGL)			

SHRI GURU RAM RAI INSTITUTE OF MEDICAL & HEALTH SCIENCES, DEHRADUN
TIME TABLE MBBS PHASE 02, BATCH 2023 W.E.F 1ST SEPT. 2024, VENUE LT03

SUBJECT WITH COLOUR CODE

Patho	Micro	Pharma	CM	FMT	MEDICINE	SURGERY	OBGY	Pandemic	Aetcom
PA	MI	PH	CM	FM	IM	SU	OG		
Date	Day	8 AM to 9 AM	9 AM to 10 AM	10 AM TO 1 PM	1PM TO 2PM	2 PM TO 4 PM			
6-May-25	Tuesday	PH1.37 [Lec.-61] Describe the mechanisms of action, types, doses, side effects, indications and contraindications of the drugs used as sex hormones, their analogues and anterior Pituitary hormones	(L-55) MI 3.1 Intestinal Helminthic Infections-3 • Intestinal trematode infections: Fasciolopsis buski, Schistosoma mansoni, S. japonicum and others (VI Gen Med., Paedia & HI Patho)	CP	Lunch	Integrated Learning] [SGD- 125] IM 12.13 Describe the Pharmacology, indications, adverse reaction, interactions of thyroxine and anti-thyroid drugs. (Integration with General medicine)			
7-May-25	Wednesday	(L-56) MI 3.1 Intestinal Helminthic Infections-4 Intestinal nematode infections: , Enterobius, Strongyloides (VI Gen Med., Paedia & HI Patho)	Patho Lecture 64 - PA 28.10, 28.13 Etiology, pathogenesis, pathology, laboratory findings, distinguishing features, progression and complications of acute and chronic pyelonephritis and reflux nephropathy. (VI- Gen Sur)	CP	Lunch	Patho SGL/SGT PA 28.11,28.15 Etiology, pathogenesis pathology, laboratory, urinary findings, distinguishing features progression and complications of vascular disease of the kidney &Thrombotic angiopathies (2-3PM) PA 28.16 Etiology, genetics, pathogenesis, pathology, presenting features and progression of urothelial tumors (3-4PM) (VI- Gen Sur)			
8-May-25	Thursday	Lecture 11 CM 7.3-Enumerate, describe and discuss the sources of epidemiological data (Vertical Integration with General Medicine).	PH 1.36 [Lec.-62] Describe the mechanism of action, types, doses, side effects, indications and contraindications of drugs used in endocrine disorders (diabetes mellitus)	CP	Lunch	FMT SGL/SGT/ Practical Topic - Firearm injuries-I FM3.9,FM14.12 FMT SGL/SGT/ Practical Topic - Firearm injuries-II FM3.10			
9-May-25	Friday	(L 57) MI 3.1 Intestinal Helminthic Infections-3 Intestinal nematode infections: Ascaris Trichuris and hookworm (VI Gen Med., Paedia & HI Patho)	Medicine Lecture-IM4.6 Discuss and describe the pathophysiology and manifestations of malaria IM4.22 Describe and discuss the pharmacology, indications, adverse reactions, interactions of antimalarial drugs and basis of resistance IM4.23 Prescribe drugs for malaria based on the species identified, prevalence of drug resistance and national programs IM4.26 Counsel the patient on malarial prevention	CP	Lunch	2-4PM [SGD- 127] Revision: PH5.1 Communicate with the patient with empathy and ethics on all aspects of drug use. PH5.2 Communicate with the patient regarding optimal use of a) drug therapy, b) devices and c) storage of medicines.			
10-May-25	Saturday	Patho Lecture 65 PA 28.14 Classification, etiology, genetics, pathogenesis, pathology, presenting features, progression and spread of renal tumors (VI- Paed)	Investigation of surgical patient SU9.1 Choose appropriate biochemical, microbiological, pathological, Investigation of surgical patient SU9.2 Biological basis for early detection of cancer and multidisciplinary, approach in management of cancer	AETCOM Module 2.7 Pathology	Lunch	Patho SGL/SGT PA 23.3 DOAP Describe and interpret the abnormalities in a panel containing renal function test			
11-May-25	Sunday	Sunday	Sunday	Sunday	Sunday	Sunday	Sunday	Sunday	
12-May-25	Monday	Budh Purnima							

SHRI GURU RAM RAI INSTITUTE OF MEDICAL & HEALTH SCIENCES, DEHRADUN
TIME TABLE MBBS PHASE 02, BATCH 2023 W.E.F 1ST SEPT. 2024, VENUE LT03

SUBJECT WITH COLOUR CODE

Patho	Micro	Pharma	CM	FMT	MEDICINE	SURGERY	OBGY	Pandemic	Aetcom
PA	MI	PH	CM	FM	IM	SU	OG		
Date	Day	8 AM to 9 AM	9 AM to 10 AM	10 AM TO 1 PM	1PM TO 2PM	2 PM TO 4 PM			
13-May-25	Tuesday	PH 1.36 [Lec.-63] Describe the mechanism of action, types, doses, side effects, indications and contraindications of drugs used in endocrine disorders (diabetes mellitus)	SDL 8 CM 11.4, 11.5 –Describe the principles of ergonomics in health preservation, Describe occupational disorders of health professionals and their prevention & management, Give case scenarios for next SDL (CM 11.4 No integration, CM 11.5 vertical integration with PA 26.5 and 26.7).; with marks for Musuem Study and Library Assignments as applicable.	CP	Lunch	2 - 4 PM [SGD- 129] [Integrated Learning] IM 11.16 Discuss and describe the pharmacologic therapies for diabetes, their indications, contraindications, adverse reactions and interactions. (Integration with General medicine SGD: Antithyroid drugs			
14-May-25	Wednesday	MI 3.1 : Viral gastroenteritis (Rotaviruses and others) (SDL- 9)	Patho Lecture 66 PA23.3 Describe and interpret the abnormalities in a panel containing semen analysis	CP	Lunch	Patho SGL/SGT PA23.3 DOAP Describe and interpret the abnormalities in a panel containing semen analysis			
15-May-25	Thursday	Lecture 12 CM 7.5- Enumerate, define, describe and discuss epidemiological study designs (Vertical Integration with General Medicine and SU 7.2)	PH 1.36 [Lec.-64] Describe the mechanism of action, types, doses, side effects, indications and contraindications of drugs used in endocrine disorders(osteoporosis).	CP	Lunch	MI1.2 ZN Staining 5			
16-May-25	Friday	PH 1.36 [Lec.-65] Describe the mechanism of action, types, doses, side effects, indications and contraindications of drugs used in endocrine disorders(osteoporosis).	(L-58) MI 3.7 Infective Syndromes of hepatobiliary system, abdomen & Hepatitis C virus (VI Gen Med. & HI Patho)	CP	Lunch	[SGD- 131] WRITTEN ASSESSMENT: G.I.T PH: 1.34			
17-May-25	Saturday	Patho SDL PA25.1-Bilirubin metabolism, enumerate the etiology and pathogenesis of jaundice, distinguish between direct and indirect hyperbilirubinemia (VI- Gen Med, Bioch)	Pre, intra and post- operative management SU10.1 Describe the principles of perioperative management of common surgical procedures- SU12.2 Describe and discuss the methods of estimation and replacement of the fluid and electrolyte requirements in the surgical patient . ing Physiology	AETCOM Module 2.7 Pathology	Lunch	Patho SGL/SGT PA30.6 Etiology and morphologic features of cervicitis (2-3pm) (VI- OBGY) PA36.1 Etiology, genetics, pathogenesis, pathology, presentation, sequelae and complications of retinoblastoma (3-4pm) (VI- OPHTH)			
18-May-25	Sunday	Sunday	Sunday	Sunday	Sunday	Sunday			
19-May-25	Monday	Pathology Lecture 67 - PA25.2 Pathophysiology and pathologic changes seen in hepatic failure- clincial manifestations, complications and consequences (VI- Gen Med)	OG13.1(Part-I) – Enumerate and discuss physiology of normal labor, mechanism of labor in occipitoanterior presentation; monitoring of labor including partogram; conduct of labor, pain relief; principles of induction and acceleration of labor; management of third stage of labor	CP	Lunch	MI 8.7 Hand hygiene and PPE-4; MI 8.5, 8.6 Biomedical waste management , SEMINAR			

SHRI GURU RAM RAI INSTITUTE OF MEDICAL & HEALTH SCIENCES, DEHRADUN
TIME TABLE MBBS PHASE 02, BATCH 2023 W.E.F 1ST SEPT. 2024, VENUE LT03

SUBJECT WITH COLOUR CODE

Patho	Micro	Pharma	CM	FMT	MEDICINE	SURGERY	OBGY	Pandemic	Aetcom
PA	MI	PH	CM	FM	IM	SU	OG		
Date	Day	8 AM to 9 AM		9 AM to 10 AM		10 AM TO 1 PM	1PM TO 2PM	2 PM TO 4 PM	
20-May-25	Tuesday	Patho SGL/SGT PA30.1 Epidemiology, pathogenesis, etiology, pathology, screening, diagnosis and progression of carcinoma of the cervix (VI- OBGY)		Patho SGL/SGT PA25.3A Etiology and pathogenesis of viral and toxic hepatitis: distinguish the causes of hepatitis. Pathology, complications and consequences of hepatitis (VI- Gen Med)		CP	Lunch	PH 1.37 [SGD- 133] Describe the mechanisms of action, types, doses, side effects, indications and contraindications of the drugs used as sex hormones. SGD: Antidiabetic drugs	
21-May-25	Wednesday	(L-59) MI 3.7 Viruses Causing Hepatitis: Hepatitis viruses (B&D) (VI Gen Med. & HI Patho)		Patho Lecture 68 - PA30.7& 30.8-Etiology, hormonal dependence, features and morphology of endometriosis. Etiology and morphologic features of adenomyosis (VI- OBGY)		CP	Lunch	Patho SGL/SGT PA25.3B Etiology and pathogenesis of viral and toxic hepatitis: distinguish the causes of hepatitis. Pathology, complications and consequences of hepatitis (VI- Gen Med) (2-3 PM) PA30.2& 30.9-Etiology, hormonal dependence and morphology of endometrial hyperplasia. Pathogenesis, etiology, pathology, diagnosis and spread of carcinoma endometrium (3-4pm) (VI- OBGY)	
22-May-25	Thursday	FMT Lecture Topic-Regional Injuries-I FM3.11		PH: 1.37 [Lec.-66] Describe the mechanisms of action, types, doses, side effects, indications and contraindications of the drugs used as sex hormones.		CP	Lunch	MI 3.7 Viruses Causing Hepatitis: Hepatitis viruses (A, E), yellow fever and others (VI Gen Med. & HI Patho) - SGL , Seminar	
23-May-25	Friday	PH 1.39 [Lec.-67] Describe mechanism of action, types, doses, side effects, indications and contraindications the drugs used for contraception.		8.15 Parasites causing liver infection: Amoebic liver abscess,(SGL)		CP	Lunch	[SGD-135] PH 1.39 Describe mechanism of action, types, doses, side effects, indications and contraindications the drugs used for contraception. PH 1.40 Describe mechanism of action, types, doses, side effects, indications and contraindications of 1. Drugs used in the treatment of infertility, & 2. Drugs used in erectile dysfunction.	

SHRI GURU RAM RAI INSTITUTE OF MEDICAL & HEALTH SCIENCES, DEHRADUN
TIME TABLE MBBS PHASE 02, BATCH 2023 W.E.F 1ST SEPT. 2024, VENUE LT03

SUBJECT WITH COLOUR CODE

Patho	Micro	Pharma	CM	FMT	MEDICINE	SURGERY	OBGY	Pandemic	Aetcom
PA	MI	PH	CM	FM	IM	SU	OG		
Date	Day	8 AM to 9 AM	9 AM to 10 AM	10 AM TO 1 PM	1PM TO 2PM	2 PM TO 4 PM			
24-May-25	Saturday	Surgery Formative Assessment	Surgery Formative Assessment	Pandemic Module 2.5 Pharma	Lunch	Patho SGL/SGT PA25.3C Etiology and pathogenesis of viral and toxic hepatitis: distinguish the causes of hepatitis. Pathology, complications and consequences of hepatitis (VI- Gen Med) (2-3pm) PA30.3- Pathogenesis, etiology, pathology, diagnosis of leiomyomas and disease progression and spread of leiomyosarcomas (3-4pm)			
25-May-25	Sunday	Sunday	Sunday	Sunday	Sunday	Sunday			
26-May-25	Monday	Pathology Lecture 69 - PA25.4- Describe the pathophysiology, pathology and progression of alcoholic liver disease including cirrhosis (VI- Gen Med)	OG13.1(Part-II) – Enumerate and discuss physiology of normal labor, mechanism of labor in occipitoanterior presentation; monitoring of labor including partogram; conduct of labor, pain relief; principles of induction and acceleration of labor; management of third stage of labor.	CP	Lunch	MI 3.1 Parasitic Infections of Hepatobiliary System, trematode infections (Fasciola hepatica, Clonorchis and Opisthorchis) and Others (VI Gen Med., Paedia & HI Patho); SEMINAR			
27-May-25	Tuesday	Patho SGL/SGT PA25.5 Etiology, pathogenesis and complications of portal hypertension (VI- Gen Med)	Patho SGL/SGT PA 32.6 Etiology, pathogenesis, manifestations, laboratory, morphologic features, complications and metastases of pancreatic cancer (VI- Gen Surg)	CP	Lunch	PH 1.38 [Lec.-68] Describe the mechanism of action, types, doses, side effects, indications and contraindications of corticosteroids. [SGD- 136] Prescription writing Endocrine system (PH 1.36,1.37)			
28-May-25	Wednesday	(L-60) MI 3.1 Parasitic Infections of Hepatobiliary System - hydatid disease (echinococcosis) (VI Gen Med., Paedia & HI Patho)	Remedial [Lec.- 69] PH 1.38 Describe the mechanism of action, types, doses, side effects, indications and contraindications of corticosteroids.	CP	Lunch	Patho SGL/SGT DOAP - PA 25.6 Interpret liver function and viral hepatitis serology panel. Distinguish obstructive from non-obstructive jaundice based on clinical features and liver function tests			

SHRI GURU RAM RAI INSTITUTE OF MEDICAL & HEALTH SCIENCES, DEHRADUN
TIME TABLE MBBS PHASE 02, BATCH 2023 W.E.F 1ST SEPT. 2024, VENUE LT03

SUBJECT WITH COLOUR CODE

Patho	Micro	Pharma	CM	FMT	MEDICINE	SURGERY	OBGY	Pandemic	Aetcom
PA	MI	PH	CM	FM	IM	SU	OG		
Date	Day	8 AM to 9 AM	9 AM to 10 AM	10 AM TO 1 PM	1PM TO 2PM	2 PM TO 4 PM			
29-May-25	Thursday	Pharma [SGD-137] PH1.41 Describe the mechanisms of action, types, doses, side effects, indications and contraindications of uterine relaxants and stimulants.	Pharma [SGD-138] Integrated Learning FM: 10.1 Describe General Principles and basic methodologies in treatment of poisoning: decontamination, supportive therapy, antidote therapy, procedures of enhanced elimination with regard to: i. Antipyretics – Paracetamol, Salicylates ii. Anti-Infectives (Common antibiotics – an overview) iii. Neuropsychotoxicology Barbiturates, benzodiazepines, phenytoin, lithium, haloperidol, neuroleptics, tricyclics iv. Narcotic Analgesics, Anesthetics, and Muscle Relaxants. v. Cardiovascular Toxicology Cardiotoxic plants – oleander, odollam, aconite, digitalis vi. Gastro-Intestinal and Endocrinal Drugs – Insulin injection w/n FM.	CP	Lunch	MI 8.13 Choose and interpret appropriate laboratory test in diagnosis of infectious disease (Rational use of microbiological investigations) SGL			
30-May-25	Friday	PH 1.51 [Lec.-70] Describe occupational and environmental pesticides, food adulterants, pollutants and insect repellents	MI 4.1, 4.2,4.3 Infective syndromes of skin, soft tissue and musculoskeletal systems - SGL	CP	Lunch	RODA Revision [SGD-140] PH2.3 (DOAP) Demonstrate the appropriate setting up of an intravenous drip in a simulated environment. PH 4.1 [Skill Assessment] Administer drugs through various routes in a simulated environment using mannequins.			

SHRI GURU RAM RAI INSTITUTE OF MEDICAL & HEALTH SCIENCES, DEHRADUN
TIME TABLE MBBS PHASE 02, BATCH 2023 W.E.F 1ST SEPT. 2024, VENUE LT03

SUBJECT WITH COLOUR CODE

Patho	Micro	Pharma	CM	FMT	MEDICINE	SURGERY	OBGY	Pandemic	Aetcom	
PA	MI	PH	CM	FM	IM	SU	OG			
Date	Day	8 AM to 9 AM	9 AM to 10 AM	10 AM TO 1 PM	1PM TO 2PM	2 PM TO 4 PM				
31-May-25	Saturday	Pharma SGL/SGD- 141] PH 1.58 Describe drugs used in Ocular disorders.	Pharma [SGD- 142] Integrated Learning FM: 10.1 Describe General Principles and basic methodologies in treatment of poisoning: decontamination, supportive therapy, antidote therapy, procedures of enhanced elimination with regard to: i. Antipyretics – Paracetamol, Salicylates ii. Anti-Infectives (Common antibiotics – an overview) iii. Neuropsychotoxicology Barbiturates, benzodiazepines, phenytoin, lithium, haloperidol, neuroleptics, tricyclics iv. Narcotic Analgesics, Anesthetics, and Muscle Relaxants. v. Cardiovascular Toxicology Cardiotoxic plants – oleander, odollam, aconite, digitalis vi. Gastro-Intestinal and Endocrinal Drugs – Insulin injection w/n FM.	AETCOM Module 2.8 Pharmacology-3	Lunch	Patho SGL/SGT PA30.4 Classification, etiology, pathogenesis, pathology, morphology, clinical course, spread and complications of ovarian tumors (2-3PM) PA30.5 Etiology, pathogenesis, pathology, morphology, clinical course, spread and complications of gestational trophoblastic neoplasms (VI- OBGY)				
1-Jun-25	Sunday	Sunday	Sunday	Sunday	Sunday	Sunday	Sunday	Sunday		
2-Jun-25	Monday	Summer Vacation								
3-Jun-25	Tuesday									
4-Jun-25	Wednesday									
5-Jun-25	Thursday									
6-Jun-25	Friday									
7-Jun-25	Saturday									
8-Jun-25	Sunday	Sunday	Sunday	Sunday	Sunday	Sunday	Sunday	Sunday		
9-Jun-25	Monday	Pathology Lecture 70 - PA32.4A Classification, epidemiology, etiology, pathogenesis, pathology, clinical lab features, complications and progression of diabetes mellitus (VI- Physio, Gen med)	OG13.1(Part-III) – Enumerate and discuss physiology of normal labor, mechanism of labor in occipitoanterior presentation; monitoring of labor including partogram; conduct of labor, pain relief; principles of induction and acceleration of labor; management of third stage of labor.	CP	Lunch	MI 4.1, 4.3,8.15, Etiology, clinical features, Lab diagnosis & treatment - Staphylococcal and MRSA				
10-Jun-25	Tuesday	PH 1.54 [Lec.-71] Describe vaccines and their uses.	MI 4.3 Bacteria causing SSTI - Beta-hemolytic streptococcal infections (VI DVL & Gen. Surgery) - SGL	CP	Lunch	[SGD-144] Endocrine PH: 1.38, 1.40, 1.41				

SHRI GURU RAM RAI INSTITUTE OF MEDICAL & HEALTH SCIENCES, DEHRADUN
TIME TABLE MBBS PHASE 02, BATCH 2023 W.E.F 1ST SEPT. 2024, VENUE LT03

SUBJECT WITH COLOUR CODE

Patho	Micro	Pharma	CM	FMT	MEDICINE	SURGERY	OBGY	Pandemic	Aetcom
PA	MI	PH	CM	FM	IM	SU	OG		
Date	Day	8 AM to 9 AM	9 AM to 10 AM	10 AM TO 1 PM	1PM TO 2PM	2 PM TO 4 PM			
11-Jun-25	Wednesday	(L-61) MI 4.3, 8.13 Miscellaneous Bacterial Infections of Skin and Soft Tissues: actinomycosis, nocardiosis	Patho Lecture 71 - PA32.4B Classification, epidemiology, etiology, pathogenesis, pathology, clinical lab features, complications and progression of diabetes mellitus (VI- Physio, Gen med)	CP	Lunch	Patho SGL/SGT DOAP PA 28.13 & 29.1 & 30.4 Gross specimens and microscopy (Testicular, Ovarian & Renal tumors)			
12-Jun-25	Thursday	Lecture 13 CM 7.8, 7.9-Describe the principles of association, causation and biases in epidemiological studies, Describe and demonstrate the application of computers in epidemiology (CM 7.8 Vertical Integration with General Medicine).	PH 1.55 [Lec.-72] Describe and discuss the following National Health Programmes including Immunization, Tuberculosis, Leprosy, Malaria, HIV, Filariasis, Kala Azar, and Diarrheal diseases, disorders, Blindness, Non-communicable diseases, Anemia & nutritional deficiencies.	CP	Lunch	MI 4.2, 4.3 Parasitic & fungal Infections of Skin, Soft Tissue and Musculoskeletal System (SGL)			
13-Jun-25	Friday	(L-62) MI 4.3, 8.13 Miscellaneous Bacterial Infections of Skin and Soft Tissues: Anthrax (Bacillus anthracis) (VI DVL & Gen. Surgery)	Medicine Lecture-IM4.7 Discuss and describe the pathophysiology and manifestations of the sepsis syndrome	CP	Lunch	[SGD-146]Written Assessment: Endocrine PH 1.36,1.37,1.38, 1.39,1.40,1.41			
14-Jun-25	Saturday	(L-63) MI 4.3, 8.16 Bacteria causing SSSI- Leprosy (Mycobacterium leprae) (VI DVL & Gen. Surgery & HI CM)	Patho Lecture 72 - PA 32.1 - Enumeration, classification, etiology, pathogenesis, pathology and iodine dependency of thyroid swellings (VI- Anat, Physio, Gen Med, Surg)	AETCOM Module 2.8 Pharmacology-4	Lunch	Patho SGL/SGT PA31.1 & 31.4-Classification, etiology, pathogenesis, pathology and hormonal dependence of Benign breast disease and gynecomastia (2-3pm) PA32.2 & 32.3 Etiology, cause, iodine dependency, pathogenesis, manifestations, laboratory and imaging features and course of thyrotoxicosis and hypothyroidism (3-4PM) (VI- Physio, Med)			
15-Jun-25	Sunday	Sunday	Sunday	Sunday	Sunday	Sunday			
16-Jun-25	Monday	OBG Formative Assessment	OBG Formative Assessment	CP	Lunch	MI 4.1 Bacteria causing SSSI- Gas gangrene (Clostridium perfringens) and infections due to non-sporing anaerobes , FA (Gastrointestinal and Hepatobiliary)			
17-Jun-25	Tuesday	PH 1.57 [Lec.-73] Describe drugs used in skin disorders.	SDL 9 CM 19.1 to 19.3- Define and describe the concept of Essential Medicine List (EML), Describe roles of essential medicine in primary health care and Describe counterfeit medicine and its prevention, Give case scenarios for next SDL (Horizontal Integration with Pharmacology); with marks for Musuem Study and Library Assignments as applicable.	CP	Lunch	[SGD- 148] Revision: PH4.2 Demonstrate the effects of drugs on blood pressure (vasopressor and vaso-depressors with appropriate blockers) using computer aided learning.			

SHRI GURU RAM RAI INSTITUTE OF MEDICAL & HEALTH SCIENCES, DEHRADUN
TIME TABLE MBBS PHASE 02, BATCH 2023 W.E.F 1ST SEPT. 2024, VENUE LT03

SUBJECT WITH COLOUR CODE

Patho	Micro	Pharma	CM	FMT	MEDICINE	SURGERY	OBGY	Pandemic	Aetcom
PA	MI	PH	CM	FM	IM	SU	OG		
Date	Day	8 AM to 9 AM	9 AM to 10 AM	10 AM TO 1 PM	1PM TO 2PM	2 PM TO 4 PM			
18-Jun-25	Wednesday	MI 4.1 Tetanus (SDL 10)	Patho Lecture 73 - PA32.5-Etiology, genetics, pathogenesis, manifestations, laboratory and morphologic features of hyperparathyroidism	CP	Lunch	Patho SGL/SGT PA 23.3 DOAP - Describe and interpret the abnormalities in a panel containing thyroid function tests			
19-Jun-25	Thursday	FMT Lecture Topic-Regional Injuries-II FM3.12	PH 1.60 [Lec.-74] Describe and discuss Pharmacogenomics and Pharmacoeconomics.	CP	Lunch	MI 4.3 Viral Exanthems and Other Cutaneous Viral Infections - measles, rubella, coxsackieviruses and others & Seminar - Hepatobiliary System Infections			
20-Jun-25	Friday	(L-64) MI 4.3 Viral Exanthems and Other Cutaneous Viral Infections Herpesviruses (herpes simplex, varicella-zoster and HHV- 6 and 7 infection) (VI DVL & Gen. Surgery)	Medicine Lecture-IM4.5 Describe and discuss the pathophysiology and manifestations of malignant causes of fever including hematologic and lymph node malignancies	CP	Lunch	[SGD- 150] PH 5.3 Motivate patients with chronic diseases to adhere to the prescribed management by the health care practitioner. PH 5.4 Explain to the patient the relationship between cost of treatment and patient compliance.			
21-Jun-25	Saturday	(L-65) MI 4.3 Viral Exanthems and Other Cutaneous Viral Infections poxviruses (smallpox, molluscum contagiosum), parvovirus (VI DVL & Gen. Surgery)	SDL-X PH 1.59 Describe and discuss the following: Essential medicines, Fixed dose combinations, Over the counter drugs, Herbal medicines. SGL/SGT:Pharma 10-1 pm	Research Patho, Micro, Pharma [SGD-151]	Lunch	Patho SGL/SGT PA 32.7 & 32.8 - Etiology, pathogenesis, manifestations, laboratory, morphologic features, complications of adrenal insufficiency & cushing's syndrome(2-3PM) (VI- Physio, Gen med) PA31.2- Classification, pidemiology, pathogenesis, classification, morphology, prognostic factors, hormonal dependency, staging and spread of carcinoma breast(3-4 pm) (VI- Gen Surg)			
22-Jun-25	Sunday	Sunday	Sunday	Sunday	Sunday	Sunday			
23-Jun-25	Monday	Pathology Lecture 74 PA 32.9 Etiology, pathogenesis, manifestations, laboratory and morphologic features of adrenal neoplasms	FMT SGL Topic- Crime Scene InvestigationFM2.18	CP	Lunch	MI 1.1 Ocular and Ear infections; MI 8.1 Zoonoses: Classification, Plague, Tularemia, bite wound infections and others (VI Gen Med) (SGL)			
24-Jun-25	Tuesday	PH 1.61 [Lec.-75] Describe and discuss dietary supplements and nutraceuticals.	MI 8.5, MI 8.6 Major healthcare-associated infection types—CAUTI, CRBSI - (SGL)	CP	Lunch	[SGD- 153] (DOAP) PH: 5.7 Demonstrate and understanding of the legal and ethical aspects of drug prescribing. Museum and Library Assessment			

SHRI GURU RAM RAI INSTITUTE OF MEDICAL & HEALTH SCIENCES, DEHRADUN
TIME TABLE MBBS PHASE 02, BATCH 2023 W.E.F 1ST SEPT. 2024, VENUE LT03

SUBJECT WITH COLOUR CODE

Patho	Micro	Pharma	CM	FMT	MEDICINE	SURGERY	OBGY	Pandemic	Aetcom
PA	MI	PH	CM	FM	IM	SU	OG		
Date	Day	8 AM to 9 AM		9 AM to 10 AM		10 AM TO 1 PM	1PM TO 2PM	2 PM TO 4 PM	
25-Jun-25	Wednesday	MI 8.5, MI 8.6 Major healthcare-associated infection types—VAP, SSI (VI Gen. Med. & HI CM) (SGL)		Patho Lecture 75 - PA31.3 Morphologic and microscopic features of carcinoma of the breast		CP	Lunch	Patho SGL/SGT PA 31.3 DOAP Describe and identify the morphologic and microscopic features of carcinoma of the breast	
26-Jun-25	Thursday	FMT Assessment		FMT Assessment		CP	Lunch	MI 8.7 Hand hygiene and PPE-4, MI 8.5, 8.6 Biomedical waste management & Seminar	
27-Jun-25	Friday	PH1.63 [Lec.-76] Describe Drug Regulations, acts and other legal aspects.		MI 8.2 Opportunistic infections (immunocompromised patients) Transplant infections (VI Gen. Med. & HI Patho) - SGL		CP	Lunch	Revision: [SGD- 155] Clinical Pharmacology	
28-Jun-25	Saturday	Pharma SGL/SGD- 156 Revision: PH2.3 (DOAP) Demonstrate the appropriate setting up of an intravenous drip in a simulated environment. PH 4.1 [Skill Assessment] Administer drugs through various routes in a simulated environment using mannequins.		Revision: [SGD-157] PH2.3 (DOAP) Demonstrate the appropriate setting up of an intravenous drip in a simulated environment. PH 4.1 [Skill Assessment] Administer drugs through various routes in a simulated environment using mannequins.		MI 8.5, 8.6,8.7 Healthcare-associated infections (definition, needle stick injury, risk factors, standard precautions, transmission-based precautions), Infection Control practices in hospital (Surveillance, HICC,Outbreak management) (SGL)	Lunch	Patho SGL/SGT PA 34.1- Risk factors, pathogenesis, pathology and natural history of squamous cell carcinoma of the skin (2-3PM) PA23.2 Describe abnormal findings in body fluids in various disease states (3-4pm)	
29-Jun-25	Sunday	Sunday		Sunday		Sunday	Sunday	Sunday	
30-Jun-25	Monday	Pathology Lecture 76 - PA 34.2 Risk factors pathogenesis, pathology and natural history of basal cell carcinoma of the skin		FMT SDL Topic-HOTA FM2.4		CP	Lunch	MI 8.12, 8.14 Discuss and demonstrate Confidentiality pertaining to patient's identity in lab result (AETCOM) & MI 8.7 Hand hygiene and PPE-5	
1-Jul-25	Tuesday	Pharma [Lec.-77] CM:19.3 Describe counterfeit medicine and its prevention.		MI 8.3 Organisms with Oncogenic Potential HTLV and HIV, epstein-barr virus, hepatitis B and C, and others (VI Gen. Med. & HI Patho) (SGL)		CP	Lunch	Revision: [SGD-159] PH: 1.8 Identify and describe the management of drug interactions.	

SHRI GURU RAM RAI INSTITUTE OF MEDICAL & HEALTH SCIENCES, DEHRADUN
TIME TABLE MBBS PHASE 02, BATCH 2023 W.E.F 1ST SEPT. 2024, VENUE LT03

SUBJECT WITH COLOUR CODE

Patho	Micro	Pharma	CM	FMT	MEDICINE	SURGERY	OBGY	Pandemic	Aetcom
PA	MI	PH	CM	FM	IM	SU	OG		
Date	Day	8 AM to 9 AM	9 AM to 10 AM	10 AM TO 1 PM	1PM TO 2PM	2 PM TO 4 PM			
2-Jul-25	Wednesday	(L-66) MI 8.3 Organisms with Oncogenic Potential Human papilloma virus, Kaposi sarcoma (VI Gen. Med. & HI Patho)	Patho Lecture 77 - PA 34.3 Describe the distinguishing features between a nevus and melanoma. Etiology, pathogenesis, risk factors morphology clinical features and metastases of melanoma	CP	Lunch	Patho SGL/SGT PA 34.4 DOAP Identify, distinguish and describe common tumors of the skin			
3-Jul-25	Thursday	Lecture 14 CM 11.1- Enumerate and describe the presenting features of patients with occupational illness including agriculture (No integration).	PH1.64 [Lec.-78] Describe overview of drug development, Phases of clinical trials and Good Clinical Practice.	CP	Lunch	FMT SGL/SGT/ Practical Topic-Corrosive Poison & Inorganic-Metabolic Poison Arsenic, lead, mercury, copper, iron, cadmium and thallium. FM9.1, FM9.2, FM9.3			
4-Jul-25	Friday	Medicine Formative Assessment	Medicine Formative Assessment	CP	Lunch	Revision [SGD-161] (PH 4.1) Administer drugs through various routes in a simulated environment using mannequins.			
5-Jul-25	Saturday	(L-67) MI 8.4 Emerging and re-emerging infections (VI Gen. Med. & CM)	Patho Lecture 78 Seminar		Lunch	Patho SGT/ SGD PA25.6 Liver function test Assessment			
6-Jul-25	Sunday	Sunday	Sunday	Sunday	Sunday	Sunday	Sunday	Sunday	Sunday
7-Jul-25	Monday	Pathology SGL/SGT Seminar	FMT SDL FM2.9 Describe putrefaction, mummification, adipocere and maceration	Seminar Pathology	Lunch	MI 1.1 Congenital Infections Cytomegalovirus infections, congenital varicella, neonatal herpes, congenital rubella, congenital toxoplasmosis, congenital syphilis, Zika virus infections and others (SGL)			
8-Jul-25	Tuesday	Revision: [Lec.-79] CVS	SDL 10 CM 12.1 to 12.4- Define and describe the concept of Geriatric services, Describe health problems of aged population, Describe the prevention of health problems of aged population, Describe National program for elderly (Vertical Integration with General Medicine; CM 12.1 with IM 24.18); with marks for Museum Study and Library Assignments as applicable.	Research Patho, Micro, Pharma [SGD-151]	Lunch	Revision: [SGD- 164] Clinical Pharmacology			

SHRI GURU RAM RAI INSTITUTE OF MEDICAL & HEALTH SCIENCES, DEHRADUN
TIME TABLE MBBS PHASE 02, BATCH 2023 W.E.F 1ST SEPT. 2024, VENUE LT03

SUBJECT WITH COLOUR CODE

Patho	Micro	Pharma	CM	FMT	MEDICINE	SURGERY	OBGY	Pandemic	Aetcom
PA	MI	PH	CM	FM	IM	SU	OG		
Date	Day	8 AM to 9 AM	9 AM to 10 AM	10 AM TO 1 PM	1PM TO 2PM	2 PM TO 4 PM			
9-Jul-25	Wednesday	(L-68) MI 1.1 Laboratory acquired infections	Patho Lecture 79 Seminar	MI 1.6 Antimicrobial stewardship, monitoring of antimicrobial therapy and rational use of antimicrobial agents (HI Pharma) (SGL).Seminar	Lunch	Patho SGL/SGT SVL			
10-Jul-25	Thursday	Lecture 15 CM 11.3 -Enumerate and describe specific occupational health hazards, their risk factors and preventive measures. Give case scenarios for next SDL (No integration).	CM Assessment	Seminar Pathology	Lunch	MI 8.12, 8.14 Discuss and demonstrate Confidentiality pertaining to patient's identity in lab result (AETCOM); FA- Skin & soft tissue infection & HAI			
11-Jul-25	Friday	Revision: [Lec.-80] CNS	(L-69) MI 1.1 Bioterrorism	[SGD- 165] Seminar Pharmacology	Lunch	CAL Revision: [SGD- 167 PH 4.2 (DOAP) Demonstrate the effects of drugs on blood pressure (vasopressor and vaso-depressors with appropriate blockers) using computer aided learning.			
12-Jul-25	Saturday	(L-70) MI 8.1 Vector-borne infections & Ectoparasite infestations (VI Gen. Med.)	Patho Lecture Seminar	MI 8.5, 8.6 Biomedical waste management (VI Gen. Med. & HI CM)	Lunch	Patho SGL/SGT Seminar			
13-Jul-25	Sunday	Sunday	Sunday	Sunday	Sunday	Sunday	Sunday	Sunday	Sunday
Pre University and University Examination									
14-Jul-25	Monday			Pre Patory Leave					
15-Jul-25	Tuesday			Pu, Patho-I					
16-Jul-25	Wednesday			Pu, Patho-II					
17-Jul-25	Thursday			Gap					
18-Jul-25	Friday			Pu, Micro-I					
19-Jul-25	Saturday			Pu, Micro-II					
20-Jul-25	Sunday	Sunday	Sunday	Sunday	Sunday	Sunday	Sunday	Sunday	Sunday
21-Jul-25	Monday			Pu, Pharma-I					
22-Jul-25	Tuesday			Pu, Pharma-II					
23-Jul-25	Wednesday			Pu, Practical , PA,MI,PH					
24-Jul-25	Thursday			Pu, Practical , PA,MI,PH					
25-Jul-25	Friday			Pu, Practical , PA,MI,PH					
26-Jul-25	Saturday			Pu, Practical , PA,MI,PH					
27-Jul-25	Sunday	Sunday	Sunday	Sunday	Sunday	Sunday	Sunday	Sunday	Sunday

SHRI GURU RAM RAI INSTITUTE OF MEDICAL & HEALTH SCIENCES, DEHRADUN
TIME TABLE MBBS PHASE 02, BATCH 2023 W.E.F 1ST SEPT. 2024, VENUE LT03

SUBJECT WITH COLOUR CODE

Patho		Micro	Pharma	CM	FMT	MEDICINE	SURGERY	OBGY	Pandemic	Aetcom
PA		MI	PH	CM	FM	IM	SU	OG		
Date	Day	8 AM to 9 AM		9 AM to 10 AM		10 AM TO 1 PM		1PM TO 2PM	2 PM TO 4 PM	
28-Jul-25	Monday					Pre Patory Leave				
29-Jul-25	Tuesday					Pre Patory Leave				
30-Jul-25	Wednesday					Pre Patory Leave				
31-Jul-25	Thursday					Pre Patory Leave				
1-Aug-25	Friday					Pre Patory Leave				
2-Aug-25	Saturday					Pre Patory Leave				
3-Aug-25	Sunday	Sunday	Sunday		Sunday		Sunday	Sunday	Sunday	
4-Aug-25	Monday					Pre Patory Leave				
5-Aug-25	Tuesday					Pre Patory Leave				
6-Aug-25	Wednesday					Pre Patory Leave				
7-Aug-25	Thursday					Pre Patory Leave				
8-Aug-25	Friday					Pre Patory Leave				
9-Aug-25	Saturday					Raksha Bandhan				
10-Aug-25	Sunday	Sunday	Sunday		Sunday		Sunday	Sunday	Sunday	
11-Aug-25	Monday					Pre Patory Leave				
12-Aug-25	Tuesday					Pre Patory Leave				
13-Aug-25	Wednesday					University, Patho-I				
14-Aug-25	Thursday					University, Patho-II				
15-Aug-25	Friday					Independence Day				
16-Aug-25	Saturday					Janmashtami				
17-Aug-25	Sunday	SUniversityday	SUniversityday		SUniversityday		Universityday	SUniversityday	SUniversityday	
18-Aug-25	Monday					University, Micro-I				
19-Aug-25	Tuesday					University, Micro-II				
20-Aug-25	Wednesday					GAP				
21-Aug-25	Thursday					University, Pharma-I				
22-Aug-25	Friday					University, Pharma-II				
23-Aug-25	Saturday					GAP				
24-Aug-25	Sunday	Sunday	Sunday		Sunday		Sunday	Sunday	Sunday	
25-Aug-25	Monday					GAP				
26-Aug-25	Tuesday					GAP				
27-Aug-25	Wednesday					University, Practical, Pa, Mi, Ph				
28-Aug-25	Thursday					University, Practical, Pa, Mi, Ph				
29-Aug-25	Friday					University, Practical, Pa, Mi, Ph				
30-Aug-25	Saturday					University, Practical, Pa, Mi, Ph				
31-Aug-25	Sunday					Sunday				
1-Sep-25	MBBS Final Prof Part-I Start from 01st Sept. 2025									

Minimum Hrs Required for MBBS Phase 02 Batch 2023

Subject	Lecture	SGL	SDL	AETCOM	Pandemic	Total
Pathology	80	165	10	16	0	271

SHRI GURU RAM RAI INSTITUTE OF MEDICAL & HEALTH SCIENCES, DEHRADUN
TIME TABLE MBBS PHASE 02, BATCH 2023 W.E.F 1ST SEPT. 2024, VENUE LT03

SUBJECT WITH COLOUR CODE

Patho	Micro	Pharma	CM	FMT	MEDICINE	SURGERY	OBGY	Pandemic	Aetcom
PA	MI	PH	CM	FM	IM	SU	OG		
Date	Day	8 AM to 9 AM		9 AM to 10 AM		10 AM TO 1 PM	1PM TO 2PM	2 PM TO 4 PM	
Microbiology	70	135		10		10	10	235	
Pharmacology	80	165		10		11	6	272	
CM	15	FAP 30		10		0	12	67	
FMT	12			8		0	0	20	
Medicine	20	0		0		0	0	20	
Surgery	20	0		0		0	0	19	
OBGY	20	0		0		0	0	20	
Posting								540	
Sports								35	